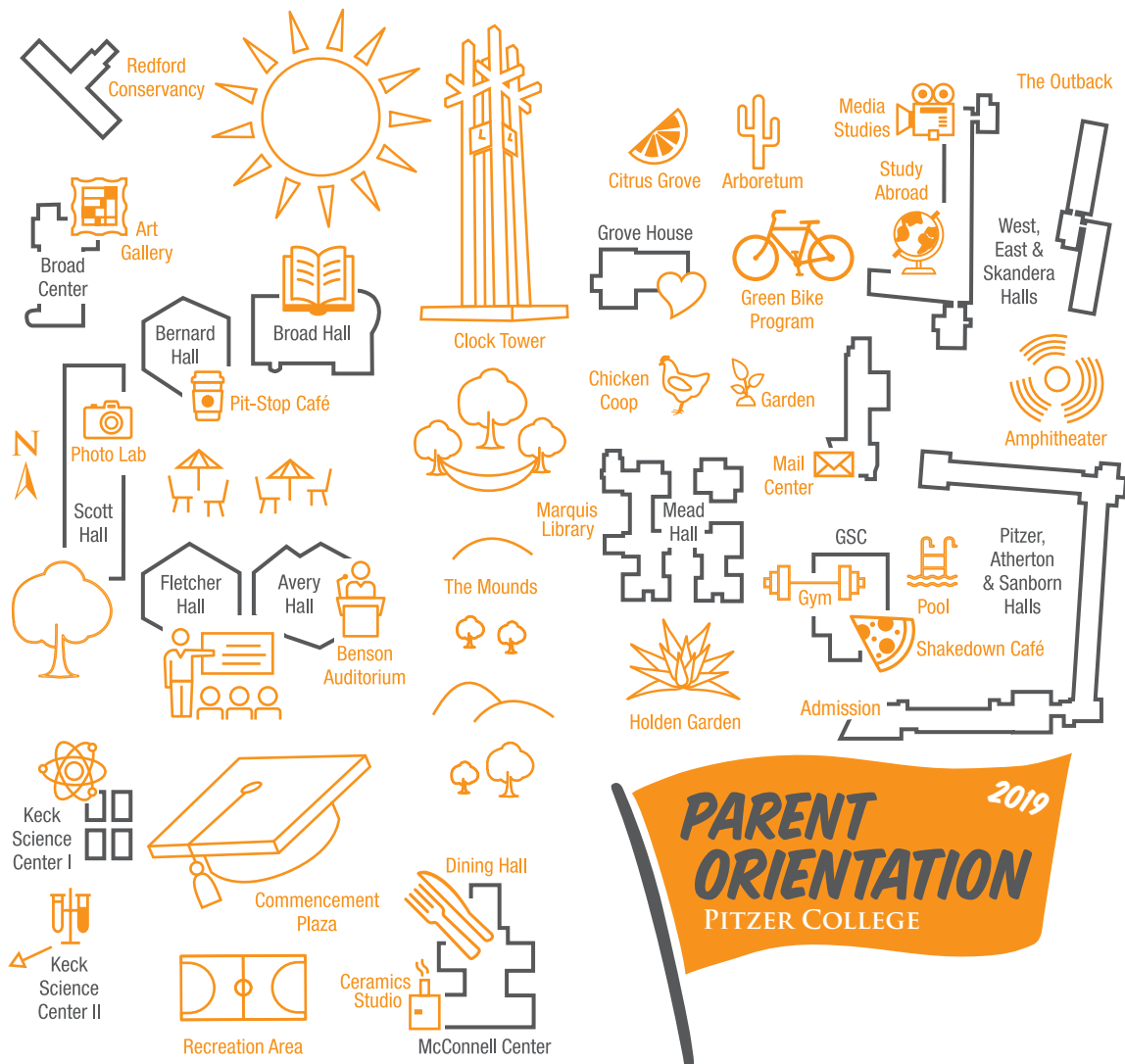


2019-20

PITZER COLLEGE PARENT GUIDE





Office of Parent Relations
1050 North Mills Avenue, Claremont, CA 91711
909.607.4030 parents@pitzer.edu www.pitzer.edu/parents
www.facebook.com/groups/PitzerParentAssociation/

Pitzer College

PARENT GUIDE

2019-20

TABLE OF CONTENTS

2019-20 Academic Calendar	2	Office of Study Abroad	20
Important Contacts	4	Office of International Programs	21
Parent Association	5	Office of Information Technology	22
Parent Ambassadors and Volunteer Opportunities	6	Office of Financial Aid	24
Office of Student Affairs	8	Office of Student Accounts	27
Family Educational Rights and Privacy Act (FERPA)	13	Claremont Cash and Student Health Services	29
Office of the Dean of Faculty	14	Campus Map	30
Institute for Global/Local Action & Study	15	The City of Claremont	32
Community Engagement Center	16	Local Resources	33
CASA Pitzer	17	Places of Interest	37
Office of Career Services	18		

FALL 2019 ACADEMIC CALENDAR

AUGUST

24	Sat	New Student Move-in/New Student Orientation and Orientation Adventure begins
26-29	Mon-Thurs	Orientation Adventure Program
29-Sept. 2	Thurs-Mon	New Student Orientation continues
31-Sept. 1	Sat-Sun	Academic advising for new students

SEPTEMBER

1	Sun	New student registration
1	Sun	Residence halls open for returning students at 10 a.m.
2	Mon	<i>Labor Day</i>
3	Tues	Convocation for new students
3	Tues	First day of classes
16	Mon	Last day to add a class (full and half credit)
16	Mon	Last day to add/drop for a tuition refund or financial aid adjustment

OCTOBER

9	Wed	Suggested date for faculty to submit low-grade notifications
21-22	Mon-Tues	<i>Fall Break – no classes</i>
24	Thurs	Last day to drop a class without a recorded grade & without being charged semester overload fee
24	Thurs	Major and Minor Declaration Forms due for juniors (Class of 2021)
28	Mon	Special Major information meeting 4 p.m.

NOVEMBER

4-5	Mon-Tues	Advising days (classes still in session)
7	Thurs	Last day to choose Pass/No Credit grading option; forms due to Registrar's Office
19-22	Tues-Fri	Pre-Registration for spring 2020 semester
22	Fri	Independent Study Forms due for spring 2020 (full and half credit)
27-29	Wed-Fri	<i>Thanksgiving Break – no classes</i>

DECEMBER

13	Fri	Last day of classes for fall semester
13	Fri	Last day to withdraw from a class (grade recorded as "W")
16-20	Mon-Fri	Final examinations
21	Sat	Residence halls close at noon
26	Thurs	All grades due to Registrar's Office by noon

SPRING 2020 ACADEMIC CALENDAR

JANUARY

17	Fri	New Student Orientation
19	Sun	Residence halls open at 10 a.m.
20	Mon	<i>Martin Luther King, Jr. Day – no classes</i>
21	Tues	Spring semester classes begin

FEBRUARY

3	Mon	Last day to add a class (full and half credit)
3	Mon	Last day to add/drop for a tuition refund or financial aid adjustment
26	Wed	Suggested date for faculty to submit low-grade notifications

MARCH

12	Thurs	Last day to drop a class without a recorded grade & without being charged semester overload fee
16-20	Mon-Fri	<i>Spring Break – no classes</i>
27	Fri	<i>César Chavez Day – no classes</i>

APRIL

6-7	Mon-Tues	Advising days (classes still in session)
9	Thurs	Last day to choose Pass/No Credit grading option; forms due to Registrar's Office
21-23	Tues-Thurs	Pre-registration for fall 2020
23	Thurs	Independent Study Forms due for fall 2020 (full and half credit)
29	Mon	Independent Study Forms due for summer 2020 (full and half credit)

MAY

1	Fri	Last day for graduating seniors to withdraw from a class (grade recorded as "W")
6	Wed	Last day of classes for the spring semester
7	Thurs	Academic Festival
7-8	Thurs-Fri	Senior Finals; reading days for all other students
8	Fri	Final day for non-seniors to withdraw from a class (grade recorded as "W")
8	Fri	Grades for graduating seniors must be submitted by noon
11-15	Mon-Fri	Final examinations
16	Sat	Commencement
17	Sun	Residence halls close at noon for all students
21	Thurs	Grades for non-graduating students must be submitted by noon

IMPORTANT CONTACTS

PARENT RELATIONS

Kalyn Rose Miller
*Assistant Director of
Parent Relations*
909.607.9410

ADMISSION

Yvonne Berumen '97
*Vice President of
Admission and Financial Aid*
909.621.8129
admission@pitzer.edu

ALUMNI RELATIONS

Jenna Gough
*Assistant Director of
Alumni Relations*
909.607.3145
alumni@pitzer.edu

CAMPUS LIFE

Dan Hirsch
Dean of Campus Life
909.621.8251
dan_hirsch@pitzer.edu

CAREER SERVICES

Brad Tharpe
*Director of
Career Services*
909.621.8519
careerservices@pitzer.edu

COMMUNITY ENGAGEMENT CENTER

Tricia Morgan
Managing Director
909.607.8184
cec_staff@pitzer.edu

CASA PITZER

Tessa Hicks Peterson
Director
909.607.3061
cec_staff@pitzer.edu

DEAN OF FACULTY

Allen M. Omoto
*Vice President for
Academic Affairs &
Dean of Faculty
(effective July 1, 2019)*
909.621.8217
dean_faculty@pitzer.edu

DUPLICATING SERVICES

Lynda Casey
Supervisor
909.621.8461
duplicating@pitzer.edu

FINANCIAL AID

Kara Moore
Director
909.621.8208
financial_aid@pitzer.edu

HOUSING

Kirsten Carrier
*Associate Dean of Students and
Director of Residence Life and
Conference Services*
909.607.3896
housing@pitzer.edu

INFORMATION TECHNOLOGY

Robert Goldstein
Director
909.621.8548
help@pitzer.edu

MAIL CENTER

Kathleen Kile '97
Supervisor
909.607.3827
kathleen_kile@pitzer.edu

REGISTRAR

Eva Peters
Registrar
909.607.2650
registrar@pitzer.edu

STUDENT ACCOUNTS

Garrett Terrones
Supervisor
909.621.8191
student_accounts@pitzer.edu

STUDENT AFFAIRS

Sandra Vasquez
*Assistant VP for Student Affairs
and Dean of Students*
909.621.8241
dean_student@pitzer.edu

STUDY ABROAD AND INTERNATIONAL PROGRAMS

Michael Ballagh
*Associate Vice President,
Study Abroad and
International Programs*
909.621.8104
studyabroad@pitzer.edu

PARENT ASSOCIATION



Academically rigorous and intellectually stimulating, a Pitzer College liberal arts education broadens social and intercultural awareness. This education is based on small class sizes that facilitate intellectual growth, interdisciplinary studies and numerous programs that encourage students to become involved in their local community and in the world around them.

All parents of current students are members of the Pitzer Parent Association. As a member, you will have many opportunities to contribute to this transformative community while helping to inform friends and colleagues about the unique educational experience your student is

receiving. You will be invited to a broad slate of events on campus and around the country and will receive e-newsletters to keep you up to date about happenings at the College.

Stay connected with Pitzer parents by joining our Facebook group:
www.facebook.com/groups/PitzerParentAssociation

PARENT AMBASSADORS & VOLUNTEER OPPORTUNITIES

The Office of Parent Relations offers a variety of volunteer opportunities to fit your schedule and interests through the Parent Ambassador Program, and we encourage you to be involved! The program gives you a chance for you to engage with the College in a meaningful way and learn more about your student's educational experience. Ambassadors also support Pitzer by contributing financially to the Pitzer Fund or other areas of the College.

REGIONAL OPPORTUNITIES

Many students and their families come to Pitzer from outside of California and want to remain connected to the College. Our Regional Ambassadors act as the College's liaisons by engaging local families and serving as hosts for Pitzer gatherings. Ambassadors are desired in Boston, Denver, DC, Los Angeles, New York, Portland, San Francisco and Seattle. They serve in the following ways:

- Making phone calls to parents and families to invite them to Pitzer events in their area
- Hosting Summer Welcome Receptions or alumni and parent events
- Serving as a local contact for Pitzer families in their area

CAMPUS EVENTS

Volunteering at campus events is a great way to connect with the College during your student's time at Pitzer. Parents may help provide programmatic support for any of our signature parent events:

Parent Orientation

Parent Orientation is a wonderful opportunity for new parents to learn about Pitzer College and get acquainted with the campus. Parent Orientation volunteers help by:

- Participating in information sessions
- Making phone calls to invite fellow parents to campus events

Family Weekend

All parents and family members of Pitzer students are invited to campus for this annual event held in February. This weekend is a great chance for students to share their life at Pitzer with loved ones. Campus Event Ambassadors serve in the following ways:

- Participating in information sessions
- Making phone calls to invite fellow parents to campus events
- Introducing faculty speakers



FUNDRAISING

Contributions to the Pitzer Fund help Pitzer maintain and strengthen a number of important programs, including financial aid, faculty research, study abroad and student services. Fundraising Ambassadors serve in the following ways:

- Contributing personally to the Pitzer Fund
- Making phone calls to other parents to thank them for financially supporting the College
- Attending or hosting events in their region and sharing why they support the College

PARENT LEADERSHIP COUNCIL

The Parent Leadership Council (PLC) serves as the volunteer leadership organization for the Pitzer College Parent Association. The PLC supports the efforts of the Office of Parent Relations and assists with the design and implementation of programs that provide connections to families of Pitzer students and alumni.



CAREER SERVICES

Through the Office of Career Services, Career Services Ambassadors offer Pitzer students real-world advice and expertise from diverse fields. Career Service Ambassadors may help in a number of ways:

- Sending the Office of Career Services job and internship opportunities at their place of employment
- Offering to host summer or winter break job-shadowing opportunities
- Providing general assistance with resume review and mock interviews
- Supporting the Pitzer Internship Fund
- Participating in information sessions

SOCIAL MEDIA

Our Social Media Ambassadors work remotely with the Office of Parent Relations by posting, liking and sharing their unique Pitzer experience with other families within the online Pitzer parent community. Social Media Ambassadors help by:

- Posting photos that represent their Pitzer experience
- Sharing stories that enhance the online community
- Engaging other parent-users by providing insight into their Pitzer experience thus far
- Setting the tone for socially responsible usage
- Promoting Pitzer philanthropy events such as #GivingTuesday and One Week. One Pitzer.

For more information about the Parent Ambassador program and other parent activities, please contact the Office of Parent Relations:

909.607.4030
parents@pitzer.edu
www.pitzer.edu/parents

OFFICE OF STUDENT AFFAIRS (OSA)

ROLE OF THE OFFICE OF STUDENT AFFAIRS

As a liberal arts and sciences college, Pitzer affords students a set of unique educational objectives and considerable flexibility for attaining them. On the academic side of this educational endeavor, the faculty adviser is the key source of information, advice and support. On the co-curricular, social and campus-life side of this educational endeavor, OSA is the key source of information, advice, active support and programs.

Fundamentally, OSA helps students achieve their personal and collective goals in this residential community. We also recognize that, at times, individuals may diverge from the standards of behavior that make community living enjoyable. At such times, it is the task of the Office of Student Affairs to address the individual and the behavior to pursue such responses as seem appropriate for the individual and the community. Office of Student Affairs, 909.621.8241

NEW STUDENT ORIENTATION

New Student Orientation consists of both on- and off-campus activities. Off campus, Orientation Adventure helps foster the development of meaningful relationships between new students right when they arrive. The on-campus component of orientation helps introduce new students to the educational opportunities and course registration process as well as the tools and resources needed to succeed at Pitzer.

Alayna Session-Goins, assistant dean of campus life, alayna_session-goins@pitzer.edu, 909.607.2988

STUDENT ASSISTANCE

OSA offers assistance and referral for students' problems as they arise. In the event of illness or personal crisis, at a student's request, a dean may alert relevant faculty that classes and/or assignments may be missed.

LEAVES OF ABSENCE

Students may sometimes find it desirable or necessary to interrupt their college education for a time. When a financial, medical or other problem makes it impossible or unwise for students to continue in college, they may apply to the Office of Student Affairs for a leave of absence or withdrawal from the College. When a leave of absence is taken before the final date to drop courses (no recorded grade), any courses the student was enrolled in will be removed from the transcript. When a leave of absence is taken after the final day to drop courses, a grade of "W" (withdrawal) will be recorded for each registered course in that semester. Leave of Absence forms must be submitted by the last day of classes for the semester.

A leave of absence permits students to return to Pitzer without applying for readmission. Leaves will normally be approved for no more than two semesters. If students decide not to return to Pitzer after a leave of two semesters, they will automatically be withdrawn from the College and must reapply for admission to return thereafter. Students may request an extension of a leave for one additional semester in the case of extenuating circumstances. Students will be placed on a leave of absence for failure to register for classes by the tenth day of the semester.

For information on refunds in the case of leaves or withdrawals, please refer to the section on "Refund Policies." For information regarding readmission, please refer to the Office of Admission.

INVOLUNTARY LEAVES OF ABSENCE

When there are indications that a student's behavior could result in psychological or physical harm to others, prompt and decisive action is in the best interest of everyone. The dean of students and the associate deans may place a student on an involuntary leave of absence for a specified period or until such time as the danger may be shown to no longer exist. The College shall retain discretion to determine when it would be appropriate for the student to return to campus.



STUDENT ACTIVITIES

OSA helps to ensure that a wide variety of campus activities are available to students. Incoming and returning students play a vital role in the culture of campus. All students are encouraged to join clubs, work on campus, join the Student Senate and hold other leadership positions. Visit the Student Activities suite in the Gold Student Health and Wellness Center for more information. Alayna Session-Goins, assistant dean of campus life, alayna_session-goins@pitzer.edu, 909.607.2988



CENTER FOR ASIAN PACIFIC AMERICAN STUDENTS (CAPAS)

CAPAS seeks to enrich and develop social, intellectual and personal growth in our students by providing Asian American, Pacific Islander, Desi and Southeast Asian American resources in a welcoming, supportive environment. The Center serves as an advocate for the Asian Pacific Islander Desi American community and promotes an educational dialogue that embraces the unique experiences of ethnic communities. CAPAS provides resources to promote and enhance academic, cultural, social and political experiences for students. The Center offers the following services: Asian American resource library, community engagement, computer station, programming (academic, cultural and social), scholarships, internships and job opportunities. In addition, the Center provides limited one-on-one support and use of the TV/ DVD, study lounge, kitchen and outdoor patio. CAPAS is dedicated to diversity by involving all members of the community in its programs and activities. Visit CAPAS in little X tower of Mead Hall. Linda Lam, director, linda_lam@pitzer.edu, 909.607.9815

5-COLLEGE STUDENT RESOURCE OFFICES

The Chaplains of The Claremont Colleges

The Claremont Colleges are served by the Interfaith Chaplains of the McAlister Center for Religious Activities. Chaplains serve as spiritual counselors, emotional healers and ethical leaders at The Claremont Colleges and are here for student support. The McAlister Center offers a full schedule of weekday and Sabbath worship opportunities, observances of holy days and programming to integrate faith and learning. The Chaplains represent Jewish, Muslim, Catholic and Protestant traditions and support the range of religious and spiritual student groups and communities including Sikh, Hindu, Latter-Day Saints, Buddhist and more. services.claremont.edu/chaplains McAlister Center, 919 North Columbia Avenue, 909.621.8685

Chicano/Latino Student Affairs (CLSA)

CLSA aims to foster a sense of familia and community at The Claremont Colleges by providing cultural programming, leadership opportunities, professional development and academic support for our diverse undergraduate and graduate students. Our primary goal is to ensure that Chicano/Latino students have a positive and rewarding academic experience while obtaining their degrees. This is accomplished by offering academic and support services that complement existing resources at each of the colleges and graduate schools, as well as social events that foster personal growth and cultural awareness. Tranquada Student Services Building, 757 College Way, 909.621.8044

EmPOWER Center

The EmPOWER Center works collaboratively to support 7C-wide educational programs and provide holistic, confidential support to all students impacted in any way by sexual assault, sexual harassment, dating/domestic violence or stalking. 1030 Dartmouth Avenue, 909.607.2689

Health Education Outreach (HEO)

At HEO, our mission is to provide educational programming, services and resources that will enable students of The Claremont Colleges to play active roles in achieving, protecting and sustaining health and wellness. HEO is dedicated to helping students find the most appropriate health and wellness information and support available. <https://services.claremont.edu/heo> Tranquada Student Services Building, 757 College Way, 909.607.3602

International Place of The Claremont Colleges (I-Place)

I-Place is an intercollegiate center dedicated to supporting The Claremont Colleges' international students and scholars. Programming at I-Place incorporates an inclusive world perspective, which seeks to reflect the richness and diversity of our community. I-Place is a professional student services office that provides numerous opportunities for all students to celebrate, relax, learn and navigate the international student experience. I-Place also supports international education initiatives across the consortium and promotes awareness of the international student community. The International Place lounge is a great space for informal gatherings and studying. 390 East Ninth Street, Claremont McKenna College, iplace@cmc.edu, 909.607.4571, iplace.claremont.edu

Monsour Counseling and Psychological Services

The Monsour center's psychological and psychiatric services are available at no charge. During the academic year, the center is open 8:30 a.m.–5 p.m., Monday–Friday, with limited after-hour appointments available. An on-call therapist is available in emergency situations, but otherwise an appointment is usually made a few days to one week in advance. Appointments may be scheduled over the phone or in person. All sessions and discussions with a therapist are confidential. Any medication prescribed is the financial responsibility of the client. Tranquada Student Services Building, 757 College Way, 909.621.8482

Office of Black Student Affairs (OBSA)

OBSA addresses the educational needs of students of African descent. Through its cultural programs and academic services, OBSA seeks to create a supportive environment for students that will help them obtain their undergraduate and graduate degrees. OBSA also hopes to help students develop emotional autonomy, coping skills, feelings of self-worth and independence, a positive ethnic identity, mature relationships with peers, appropriate educational plans, mature career paths and a responsible lifestyle. 139 East Seventh Street, 909.607.3669

Queer Resource Center (QRC)

The QRC is a seven-college center providing resources for LGBTQIA+ (e.g. lesbian, gay, bisexual, transgender, queer/questioning, intersex, asexual/agender) individuals and allies. The QRC and its resources are open to students, faculty and staff of The Claremont Colleges. It houses a library of books, magazines and movies that can be checked out or used in the comfort of the QRC. There is also a clothing closet that maintains professional and casual clothing for students. Students can now sign up for 24-hour card-swipe access and use the center's full kitchen, projection screen and all-gender bathrooms. The QRC provides a variety of programming to educate, support and engage members of the community. 395 East Sixth Street, Pomona College, 909.607.1817

Student Health Services

Student Health Services is open Monday, Tuesday and Friday from 8 a.m. to 5 p.m.; Wednesdays from 8 a.m. to 7 p.m.; and Thursdays from 9 a.m. to 5 p.m. Appointments are recommended for all visits and can be scheduled in advance by telephone. Phones open at 8 a.m. for appointments. If you call early, same-day appointments are usually available. A \$15 charge will be assessed for any missed appointment not cancelled two hours in advance. Students without an appointment are worked into the schedule between scheduled appointments as medically indicated. There is a \$15 charge for unscheduled visits. There is no charge for regular scheduled appointments or urgent care. Urgent care is available during regular business hours for serious illness or trauma as determined by the triage nurse (e.g., bleeding, possible fracture and allergic reactions). All students are required to have an entrance health history and physical examination form on file to use the services. These forms are required for initial

admission to Pitzer as a first-year or transfer student. All students' records are confidential. Medical records are not made available to anyone without the student's permission. Tranquada Student Services Building, 757 College Way, 909.621.8222

Student Disability Resource Center (SDRC)

The SDRC is the centralized resource center for support for students with disabilities across the 7C campus communities. The SDRC works closely with the disability coordinators on all the campuses to ensure that students receive academic support services and accommodations to empower them to achieve their academic goals, while ensuring equitable treatment and access to all programs and activities across all campuses. Tranquada Student Services Building, 757 College Way, 909.607.7419

FREQUENTLY ASKED QUESTIONS

Does Pitzer offer storage for my student's use during the semester or over the summer?

No. Unfortunately, there is no space on campus for storage. Storage space can be obtained for reasonable rates from local storage vendors. www.pitzer.edu/student-life/housing

Can my student change roommates in the middle of the semester?

We do our best to facilitate roommate and suitemate agreements at the beginning of the year. If attempts to resolve any differences with the help of the Residence Life staff are unsuccessful, a student may discuss the possibility of a room change with their residence director.

If I know that my child is using an on-campus counseling service, can I obtain information about their counseling sessions?

The Family Educational Rights and Privacy Act (FERPA), also known as the Buckley Amendment, provides for the confidentiality of student records and information for students 18 years and older. In compliance with this federal regulation, Monsour Counseling and Psychological Services requires a student to sign a release form before any confidential information can be released to a parent. (See page 13)

My child is involved in a disciplinary hearing. Can I find out the status of the hearing?

FERPA applies. (See page 13)

Should I be worried if my student is involved in protests?

Pitzer College encourages and promotes responsible social action. Students and parents should understand that civil disobedience, while valuable to the process of education, might potentially result in undesirable consequences. Pitzer recognizes the right of students to speak their mind and encourages students to take responsibility for their individual actions.

My student doesn't want to use the on-campus dining services. Do I have to pay for a board plan?

All students who live on campus are required to purchase a meal plan. Students with any special dietary considerations should speak with the director of the College's dining facilities. Cindy Bennington, dining services manager, cindy_bennington@pitzer.edu, 909.607.8491

I am worried about substance use on campus.

Pitzer College adheres to all state and federal laws regarding alcohol and other drug use. The College seeks to promote responsible decision making on the part of all members of the community and takes an educational approach to substance use/abuse issues. The Office of Student Affairs offers awareness, prevention and education programs, as well as the services of an on-campus substance abuse counselor/educator. Other local resources are also available. Students who violate the College's policies on alcohol and drugs will be subject to disciplinary action.

My student needs something fixed in their residence hall room. What should they do?

Your student should fill out an online work order, available on Pitzer's website. For emergencies, students can call the Facilities Office at 909.607.2226 during normal business hours (weekdays 9 a.m.-5 p.m.), or Campus Safety at 909.607.2000 after hours.

What measures are taken to ensure a safe campus?

Student safety is a top priority at Pitzer. Campus Safety and Facilities work hand-in-hand with the Office of Student

Affairs to promote and provide a safe environment on campus and to educate students about their responsibility in contributing to a safe campus. Emergency call boxes/phones are installed throughout campus and many parking lots have continual video surveillance. Resident assistants, residence directors, campus safety officers and many students have Red Cross, CPR and first-aid training. In addition, professional staff members, including a residence director and Student Affairs dean, are on-call 24 hours a day, seven days a week. The College-issued student identification card is necessary for access to most residential living areas and all Pitzer and 5C social events. LiveSafe is a mobile app that students can download to contact Campus Safety, send tips and virtually "walk" their friends home.

Does my child need to get a CA State Driver's License?*

According to the California Department of Motor Vehicles: If you are a visitor in California over 18 and have a valid Driver's License from your home state or country, you may drive in this state without getting a California Driver's License as long as your home state license remains valid. If you take a job here or become a resident, you must get a California Driver's License within 10 days. Residency is established by voting in a California election, paying resident tuition, filing for home owner's property tax exemption or securing any other privilege or benefit not ordinarily extended to non-residents.

*Please note that students are not permitted to have a car on campus for their first two years. Students with extenuating medical circumstances can apply for a permit. Petitions for a Pitzer parking permit can be submitted at <http://parking.formstack.com/forms/petition> For more information, contact Bryce Sternquist, transportation coordinator, at 909.607.3827.

Can students remain on campus during breaks in the academic calendar?

Students may remain on campus during Fall Break, Thanksgiving observance and Spring Break but they should be aware that the board plan is only operational when classes are in session and dining services may not be available. We recommend that students purchase Claremont Cash to use during fall and spring break periods if they choose to remain on campus. Residence

halls are closed during Winter Break and the summer. (Summer housing for students working on campus or taking summer classes is available. For more information, visit www.pitzer.edu/summer.)

My student is struggling to maintain passing grades. Is any assistance available?

Students are encouraged to work directly with their faculty instructors as well as their academic adviser to address academic issues or concerns. Student Affairs staff, particularly Gabriella Tempestoso, associate dean of students and director of academic support services, are available to provide support and resources to help students academically. gabriella_tempestoso@pitzer.edu

ADDITIONAL QUESTIONS

Academic Support Services

If you have questions regarding accommodations for a disability, tutorial services, educational plans for academic success, academic coaching, counseling or other resources, contact Gabriella Tempestoso, associate dean of students and director of academic support services, at gabriella_tempestoso@pitzer.edu.

Campus Life

If you have questions regarding New Student Orientation or student activities, contact Alayna Session-Goins, assistant dean of campus life, at alayna_session-goins@pitzer.edu.

Housing

If you have questions regarding housing assignments, changes to room or board plans, safety or furnishings, contact Valerie Schiro, assistant director of residence life and housing, at housing@pitzer.edu.

Residential Life

If you have questions regarding residence directors, resident advisers, residence hall programs and other resources, contact Kirsten Carrier, associate dean of students and director of residence life and conference services, at kirsten_carrier@pitzer.edu.

Medical Insurance

Medical insurance is mandatory for all students, and all students must have it on file with the Office of Student Affairs. Students are required to update this information every year via the online portal. If no proof of medical insurance is provided by the stated deadlines, students will be automatically enrolled and billed on The Claremont College's insurance plan. If you have any questions regarding the plan, please contact Katie Tewell, executive assistant to the vice president of student affairs, at 909.607.2821.

You can also email any questions you have to parents@pitzer.edu or call the Office of Student Affairs at 909.621.8241, and your question will be directed to the appropriate person and answered in a timely manner.

FAMILY EDUCATIONAL RIGHTS AND PRIVACY ACT (FERPA)

The Family Educational Rights and Privacy Act (FERPA) of 1974, also known as the Buckley Amendment, establishes guidelines to protect the privacy of student records and to provide for student access to records. FERPA places clear limits on the release of information from student records: except as provided for in the law, material may be released only at the student's specific written request. Such an exception is directory information, which may be released at any time unless a student has requested that it be withheld. Such directory information includes name, campus address, telephone number, concentration, participation in officially recognized activities and sports, dates of attendance, degrees and awards received and most recent previous educational institution or agency attended. The act also provides students the right to inspect their official records. Requests to examine records should be addressed to the registrar.

As parents, we hope you will understand that Pitzer must comply with federal regulations in regard to student privacy. Unless a student gives express written permission, we cannot release personal, disciplinary or academic information.

OFFICE OF THE DEAN OF FACULTY

The Office of the Dean of Faculty has broad oversight in matters related to the coordination of the curriculum and educational processes of the College through support of faculty in their teaching and research, administration of the academic program and assistance in the development of new instructional initiatives. It also supports cooperative programs with the other Claremont Colleges.

THE IMPORTANCE OF ADVISING

Effective faculty advising is important to a liberal arts education and is crucial to the Pitzer experience. At Pitzer, we take advising seriously, as we rank good advising along with good teaching at the top of our list of criteria for promotions and tenure. We ask students to plan and define a course of study that addresses a number of broadly defined objectives, but we also give considerable room for intellectual exploration, which needs to be planned in close consultation with a faculty adviser.

FREQUENTLY ASKED QUESTIONS

What is the role of the faculty adviser? Do they only carry out academic advising?

The central role of the faculty adviser is to help the student in academic planning. For incoming students, this involves explaining the College's educational objectives and helping the student chart a path toward their academic goals. Later in a student's career, it will involve helping them meet the objectives for a specific major and planning for life after Pitzer. Faculty members also work with the Office of Student Affairs to support students who are dealing with various personal or social issues (e.g. problems with roommates, difficulties with time management) by directing them to professionals at the College who are trained to address these issues.

Should I check in with my student's adviser regarding how my student is doing at Pitzer?

Please keep in mind that the adviser's primary role is working directly with the student. For legal and ethical reasons, faculty cannot share details of a student's academic record unless the student gives written permission to share that information (see FERPA guidelines on page 13).

Do students have to stay with their assigned adviser for the duration of their time at Pitzer?

No. Pitzer College has paired the First-Year Seminar program with the Academic Advising Program. Consequently, the First-Year Seminar professor is also the academic adviser for incoming students. As the academic adviser, they will help students get oriented to Pitzer and complete their general education requirements. Students generally work with their academic adviser until they declare their major. Once students declare a major, they will switch to an adviser specializing in their chosen field of study. Students with combined or double majors will have at least two academic advisers with whom they will work concurrently.

What should my student do if they have concerns about a class or an instructor?

A student is expected to discuss problems or concerns related to a course or a grade with the faculty member teaching the course. Faculty advisers are also a good resource for discussing concerns about a class or instructor. If the problem persists, the Office of the Dean of Faculty can look into the matter.



MAJORS

At Pitzer College, field groups (similar to a discipline or department) organize major requirements and courses. Students may choose existing majors at the other Claremont Colleges, provided that the fields are not offered as majors at Pitzer.

Africana Studies
 American Studies
 Anthropology
 Art—Studio
 Art History
 Asian American Studies
 Biochemistry (KSD*)
 Biology (KSD*)
 Biophysics (KSD*)
 Chemistry (KSD*)
 Chicano/a-Latino/a Studies
 Classics
 Dance (Pomona, Scripps)
 Economics
 English and World Literature
 Environmental Analysis
 Gender and Feminist Studies
 History
 Human Biology (KSD*)
 International and Intercultural Studies
 International Political Economy
 Linguistics
 Management Engineering (KSD*)
 Mathematical Economics
 Mathematics
 Media Studies
 Modern Languages, Literature and Culture: Spanish
 Molecular Biology (KSD*)
 Music (Pomona, Scripps)
 Neuroscience (KSD*)

Organismal Biology (KSD*)
 Organizational Studies
 Philosophy
 Physics (KSD*)
 Political Studies
 Psychology
 Religious Studies
 Science and Management (KSD*)
 Science, Technology and Society
 Sociology
 Theatre (Pomona)

*KSD—Keck Science Department is a joint program of Pitzer College, Claremont McKenna College and Scripps College.

INSTITUTE FOR GLOBAL/LOCAL ACTION & STUDY (IGLAS)

The Institute for Global/Local Action & Study (IGLAS) endeavors to broaden and deepen student and faculty connections to Pitzer's global sites for research and teaching and to community-based programs here in the US. IGLAS oversees the Fellowships program (Fulbright, Napier, CORO, etc.), the FirstGen Program, Global Study Trips for students and faculty, the IGLAS Fellows class and diversity/social justice training for First-Year Seminar students and works closely with Pitzer's Community Engagement Center and Criminal Justice Reform initiatives.

The goal of IGLAS is to prepare Pitzer students to become "engaged, socially responsible citizens of the world" by examining global/local issues in a robust, sequenced curriculum that develops intercultural literacy and engaged learning. Faculty-led curricular innovation combines (a) the study of globalization and its impacts; (b) learning and scholarship focused on questions of social justice; and (c) sustained engagement with communities near and far.

COMMUNITY ENGAGEMENT CENTER



The Community Engagement Center (CEC) connects students and faculty with local organizations to create community-based research, service learning and experiential education opportunities that enhance the social, environmental, cultural and economic health of our communities. The CEC serves as a liaison between the academic institution and community partners, provides internship opportunities and offers assistance with funding and programming. Additionally, the CEC provides logistical support to students, faculty, staff and community partners.

The CEC is located on the first floor of Scott Hall, adjacent to the Office of the Dean of Faculty and the Office of Student Affairs. With a newly instituted social responsibility graduation requirement, students engage with the surrounding community through Social Responsibility Praxis Courses taught in a variety of major groups.

Resources

The Community Engagement Center offers resources to students taking Social Responsibility Praxis (SRX) Courses and supports students involved in community engagement outside of classes. This support includes:

Transportation Assistance: Students are encouraged to utilize the CEC Social Responsibility Transportation Fund if they are traveling for community engagement or SRX-related internships. Students are allotted \$100 per semester, which can only be reimbursed for the semester during which they complete the work.

Clearance Assistance: Some community partners require security clearance or TB tests before a student is permitted on site. The CEC covers these costs.

Training: The CEC offers mandatory and optional trainings to students throughout the academic year for all students interested in engaging with the community. For more information, visit our website: www.pitzer.edu/cec/training-workshops/

Awards: The CEC gives out several student awards throughout the academic year. You can find more information on our website: www.pitzer.edu/cec/student-awards/

For more information, contact the CEC at 909.607.8183 or cec_staff@pitzer.edu.

CASA PITZER



CASA Pitzer is a justice-oriented, interdisciplinary program in urban studies and community-based research. With theoretical foundations in the social sciences and a strong emphasis on experiential education, the program helps students understand regional impacts of globalization and engage in local social change efforts. These efforts are informed by long-standing relationships with community organizations, city agencies and nonprofits, as well as Ontario's community organizing wing, which works with local youth organizers to identify and address pressing community issues.

Core Curriculum

CASA Pitzer students enroll in two core courses, which take place on the Pitzer campus, at the CASA Pitzer location and in our communities. Transportation is provided for off-campus classes and events.

For more information, please email us at ontariocasa@gmail.com.

OFFICE OF CAREER SERVICES

The mission of Career Services is to empower and equip students and alumni to define and achieve post-graduate success as engaged, socially responsible citizens of the world. Career Services offers a comprehensive array of services, resources and programs addressing career-related issues.

WHY USE CAREER SERVICES?

Students who are certain of their post-graduate plans should visit Career Services to work toward reaching their goals. Students who are exploring career options should engage with Career Services for assistance with working progressively and thoughtfully on mapping out a plan that will lead to a rewarding start to post-graduate life. Career Services has years of experience helping students:

- identify professional skills
- explore career interests
- research a variety of career paths
- make networking connections with alumni, parents and family members
- find internship opportunities
- refine resumes and cover letters
- improve interviewing skills
- connect with employers
- prepare graduate and professional school applications
- negotiate offers

The earlier students engage with Career Services during their academic career at Pitzer, the more help they will receive in creating and achieving a personalized, effective career plan, which may include a job, graduate program, fellowship, gap-year or other experience. An early visit to Career Services means a better chance of securing productive internships and arranging other plans that lead to post-graduate success.

SERVICES & RESOURCES

Career Advising: Career decision making often involves a comprehensive, in-depth examination of one's skills, values, interests, needs and personality. Career Services staff regularly meet with individuals in scheduled appointments and walk-in sessions to discuss the steps along the way to planning for life after graduation. This may include conducting self-assessments with students (MBTI and Strong Interest Inventory are offered), putting together an action plan to explore a specific career path or working on aspects of the internship and job search process.

Events & Workshops: Pitzer students have access to dozens of career-related events each semester, both on campus and around The Claremont Colleges. These include skill-building workshops, employer information sessions, career fairs and alumni speaker programs. Pitzer's Career Services is focused on helping students make connections with alumni and parents, both on and off campus. Additionally, students will be taken off campus on "field trips" to employer sites around Southern California.

Handshake: This online recruiting system shared by The Claremont Colleges lists hundreds of active jobs and internships, upcoming employer events and career workshops. Pitzer students can participate in the On-Campus Recruiting Program during the academic year to directly apply for jobs at organizations focused on hiring students from The Claremont Colleges.

Internships: Internships during the academic year and over the summer are important experiential learning opportunities that can have a substantial impact on a student's ability to discern and achieve





their post-graduation goals. Pitzer students should strive to have at least one, and preferably two or three substantive internships during their time at Pitzer. In addition to the many internships Pitzer students can find through Handshake, Career Services is always building new relationships with Pitzer alumni and parents who are looking to specifically hire Pitzer students to make significant contributions to their organizations as interns.

Pitzer Internship Fund: Due to the generosity of many alumni and parent donors, Career Services awards a limited number of stipends to students each year to support substantive summer internships through the Pitzer Internship Fund. These awards help to support summer internships that would otherwise be unpaid. Students who receive awards must secure (or create) their own summer internships and then go through a competitive application process to secure funding. Without this funding, many of the Pitzer Internship Fund participants would have sought alternate summer employment in place of a substantive internship.

Other Programs and Opportunities: Career Services is always looking for new ways to support career planning and expand career connections for students. Our Winter Break Shadowing program matches students with alumni and parent hosts who expose students to career fields and work environments during the winter break. The Field Trip Friday program takes students off campus on visits to Southern California employers. Career Services hosts alumni panels focused on specific professions during the fall and spring semesters. Alumni and parent volunteers are welcome for many of our programs. If you are interested in being involved, please email careerservices@pitzer.edu.

For more information, call Career Services at 909.621.8519, send an email to careerservices@pitzer.edu, visit the Career Services website at www.pitzer.edu/careerservices or stop by Scott Hall 126.

OFFICE OF STUDY ABROAD

Advisers in the Office of Study Abroad assist students who wish to study abroad as part of their Pitzer education. A majority of recent graduates have completed an educational experience abroad. With advance planning, qualified students from any major can study abroad and are encouraged to do so. Students may select from approved programs in Argentina, Bhutan, Botswana, Chile, China, Costa Rica, Cuba, Denmark, Ecuador, England, Finland, France, Germany, Ghana, Hong Kong, Israel, Italy, Japan, Korea, Kyrgyzstan, Mexico, Morocco, Nepal, Netherlands, New Zealand, Palestine, Rwanda, Scotland, Senegal, Singapore, South Africa, Spain and Sweden as well as summer programs in Brazil, Costa Rica, Japan and Vietnam. Domestic exchanges are also possible with five US colleges and universities. Approved options are subject to change.

Your student is advised to consult with their faculty adviser and the Office of Study Abroad and International Programs as early as their first semester about an interest in studying abroad. Advance planning helps to ensure that your student can complete any preparatory coursework. Students will apply in the academic year prior to the year in which they plan to study abroad. There are two application

deadlines: mid-November for fall and full-year programs and mid-March for spring programs. Applications for non-approved fall or spring programs have one deadline in November. Participation in a study abroad program usually occurs in the junior year although sophomores may also participate. Study abroad advisers are available to assist students throughout the application, preparation and re-entry processes. While there are some expenses related to overseas study that must be considered in budget planning, all students on semester study abroad programs pay the same comprehensive fees as for any other semester on campus (inclusive of tuition, student fees, room and board) plus a \$550 travel contribution (subject to change) toward the cost of round-trip airfare to their study abroad destination. Financial aid can be applied to participation in any approved study abroad program during the academic year or summer terms. The College is committed to making study abroad a possibility for all students who meet the requirements.

For more information, please contact the Office of Study Abroad and International Programs at studyabroad@pitzer.edu or visit www.pitzer.edu/studyabroad.



OFFICE OF INTERNATIONAL PROGRAMS



Pitzer College welcomes matriculating and visiting international students. Their global perspectives and presence enhance the diverse and multi-faceted Pitzer College community.

The Office of International Programs provides advice and assistance to international students through a wide range of services. A major function that begins even before the students arrive is helping them navigate and stay in good legal standing with the federal regulations concerning student visas. Upon arrival, international students receive a comprehensive orientation program and assistance with any number of tasks, ranging from finding lost luggage

to applying for a social security card. The office also works with students throughout the school year to put them in touch with informal discussion groups, help them experience different aspects of campus life and connect them with International Place and the larger international community of The Claremont Colleges. As these students from over 20 countries feel as welcomed and supported as possible, their participation in the Pitzer experience becomes that much richer, and the opportunities for intercultural exchange and education abound.

For more information, please contact international@pitzer.edu.

OFFICE OF INFORMATION TECHNOLOGY



For the most up-to-date information, please visit <https://www.pitzer.edu/information-technology>

WIRELESS NETWORKING ACCESS

Pitzer College is blanketed with several high-speed wireless networks. These networks are accessible free-of-charge with student-login credentials.

RESIDENCE HALLS

Work stations with printers attached are available in the residence halls to provide easy access for printing. Students have access to the College's global wireless networks from their rooms.

COMPUTER LABS AND CLASSROOMS

The main computer lab, located in Bernard Hall, includes both Windows and Mac computers as well as printers and scanners for student use. This facility is primarily intended for research, presentation development, printing and other general computer needs. It is available to students 24 hours a day.

Pitzer also has several classrooms with student-accessible computers: the Kenneth and Jean Pitzer Computer Classroom has 18 Windows computers; the Social Sciences Statistics Laboratory has 18 Windows computers for use by social sciences faculty and students; the Fletcher Jones Language and Culture Laboratory has 17 Macs; and Skandera Hall has 19 Macs that are primarily used for media studies.

USER SERVICES

The User Services Group in the Office of Information Technology will help Pitzer College students with the following services:

- Installation and configuration of client software
- Assistance with network and email accounts
- Maintaining working condition of residence hall network ports
- Installation and configuration of internet browser software
- Configuration of email software
- Recovering lost or corrupt files that were saved on the network drives
- Removing computer viruses and installing anti-virus software



User Services will make every attempt to help, but cannot provide hardware or guarantee recovery from all mishaps to client machines. This includes, but is not limited to:

- Providing hardware, network cables or any other equipment required to access Pitzer's network
- Hardware troubleshooting or repair
- Software troubleshooting or repair, other than client software and email or software provided to you by a User Services technician
- Maintaining network connection with software or hardware that conflict or inhibit a stable network connection
- Setup or configuration of peripherals such as printers, scanners, external drives, etc.
- Recovering applications or operating systems installed on the client computer after disk failure or inadvertent removal

CONTACT USER SERVICES

Students who run into technical issues on campus can contact us via:

Email: help@pitzer.edu

Phone: 909.607.3065 or ext. 73065. IT Helpdesk hours are Monday through Friday, 8 a.m.-noon and 1 to 5 p.m. during the academic year.

Visiting us: We're available Monday through Friday, 8 a.m. to noon and 1 to 5 p.m. in the Bernard Hall Computer Lab.

OFFICE OF FINANCIAL AID

If you have questions about financial aid, your student's eligibility for financial aid or educational loans at Pitzer, the Office of Financial Aid can help!

COMMUNICATION

The Office of Financial Aid officially communicates financial aid updates, deadlines and important information directly to the student. Once the student is enrolled, all communication is sent to the student's official Pitzer email or, for more general reminders, to the student listserv.

Students also have access to financial aid information, such as awards, messages and required documents, through their MyCampus Portal. Access to this portal is automatic. Once the student enrolls at Pitzer, all information regarding financial aid will be made available to them through their portal.

FERPA prevents the Office of Financial Aid from discussing financial aid matters with anyone other than the student without the student's consent. Most students who completed the CSS Profile application authorized parental access to financial aid records by answering "yes" to the consent question.

Students may give additional parties (such as noncustodial parents, counselors, lawyers, etc.) permission to access their financial aid records by completing a FERPA Waiver with the Office of Financial Aid.

IMPORTANT REMINDERS

All students who receive a Pitzer Scholarship are required to reapply for financial aid by March 2 of every year.

All documents, such as the FAFSA, CSS Profile and copies of tax documents, are required in order to be reconsidered for aid the following year. The FAFSA and CSS Profile applications are available on October 1 of every year and can be completed earlier than the March 2 deadline. The Office of Financial Aid will send multiple reminders to students via their Pitzer email regarding these deadlines and requirements. In addition, the Office of Financial Aid

will mail a postcard to the student's home address over the winter break.

Once the student's information is reviewed by a counselor, additional documents may be requested. Returning students who submitted all requested materials by the deadline will receive their financial aid notifications over the summer months (June and July).

WORK-STUDY

Students who were awarded work-study can find job listings online through Career Services. Career Services has an online listing of all work-study jobs and is happy to work with students. Jobs are available on campus and at approved off-campus nonprofit agencies. There are enough jobs so that any student with work-study can work; however, a job is not guaranteed.

In general, most students can work between 6 and 7 hours per week throughout the academic year. Students are paid California minimum wage, which is currently \$12/hour. Once a student has earned their full work-study award, they are expected to stop working.

All students who have a work-study job are paid every other Friday for their time worked. Earnings are issued directly to the student through a paycheck or direct deposit. Work-study funds are not applied to the student's bill. It is up to the student and their family to determine how to allocate work-study funds and whether those funds will be used to help pay the student's bill or help offset other expenses.





STUDY ABROAD

Pitzer offers financial aid to students who decide to study abroad through a Pitzer approved program. In general, students who go abroad receive similar aid while abroad as they do when they are on campus.

Students who go abroad receive a Study Abroad Scholarship, which has two enhancements from their Pitzer Scholarship. First, the study abroad scholarship is increased by \$550 to cover the student's travel contribution, which is charged by the Study Abroad Office to the student's account. Second, because students cannot work while they are abroad, they are not packaged with work-study for the semester. Instead, the study abroad scholarship is increased to cover the work-study award.

Thus, students who go abroad do not normally see a change on their bill when they are abroad versus when they are on campus. However, because the student's work-study is converted into a grant and is paid directly

to the student's account (versus being earned by the student), most families do see a small reduction in their Student Account balance when the student goes abroad.

SATISFACTORY ACADEMIC PROGRESS (SAP)

Pitzer checks the student's academic progress every semester in order to ensure the student is meeting SAP requirements.

All students must maintain a 2.0 GPA at the end of every semester. In addition, students must make progress toward their degree. This means attempting and completing four courses every semester of attendance, which will allow the student to graduate within four academic years, or eight academic semesters.

The Office of Financial Aid will notify students who fall behind or do not meet GPA requirements on a semester basis. Complete information regarding SAP requirements is available on the Financial Aid website at www.pitzer.edu/financial-aid.

ADDITIONAL RESOURCES

Scholarships

Consideration for any Pitzer need-based scholarship is done directly through the Office of Financial Aid during the initial review of the student's aid eligibility. Families who experience changes to their circumstances throughout the academic year should contact the Office of Financial Aid.

Outside scholarships are available through private companies and organizations. Normally, students can find outside scholarship opportunities through their high school or local community. However, there are many search engines available where students can find and apply for outside scholarships. Such websites include: Fastweb, Unigo and Cappex.

All outside scholarships, tuition benefits or veteran benefits the student receives must be reported to the Office of Financial Aid. Outside resources will be incorporated into the student's existing financial aid package and will normally reduce the student's loan and/or work eligibility. Outside resources cannot be used to replace the expected family contribution (EFC).

Loans

Most students are eligible to borrow student loans through the Federal Direct Loan program. Students who receive financial aid are usually awarded their maximum subsidized loan eligibility and have additional unsubsidized loan options. For more information regarding these loans, please contact the Office of Financial Aid.

Parents may also have parent loan options through the Parent PLUS Loan program. This program allows the parent to borrow up to the cost of attendance minus any aid the student receives. Interest accrual for this loan is immediate and repayment begins 60 days after disbursement, but repayment may be deferred.

Short-term emergency loans of up to \$500 are available to all students. These loans are typically used to assist students in purchasing books and supplies and must be repaid within 30 days. Students interested in this loan can obtain an application from the Office of Financial Aid.

FREQUENTLY ASKED QUESTIONS

My child did not receive a merit scholarship, can they be reconsidered in subsequent years?

Pitzer offers a renewable academic merit scholarship for \$5,000. These scholarships are only considered and awarded at the time of admission. Students who did not receive a merit scholarship when they were admitted are not eligible for this scholarship in subsequent years.

Does financial aid pay for Pitzer's Health Insurance?

The cost of the Pitzer Health Insurance is not included in initial financial aid packages. Students who cannot waive the health insurance can contact the Office of Financial Aid to inquire about a health insurance loan. A no interest loan may be available to students to cover this cost. Funds are limited and may be on a first-come, first-served basis. In addition, students who receive outside scholarships may use those funds to cover the cost of Pitzer's Health Insurance.

My child wants to live in a single, does financial aid cover that?

Financial aid does not cover the cost of single rooms. Aid for room and board is based on a double room and the 16-meal plan. However, there may be loan options available to cover the cost of a single.

My child wants to live off campus. How does this affect their financial aid?

Pitzer does not make adjustment to a student's financial aid award for living off-campus. The Student Accounts Office will only bill the student for tuition, fees and a meal plan (if the student elects to purchase a meal plan). This may result in a lower balance owed to the College, as there is no charge for room. If the lower balance creates a credit on the student's account, that credit should be used to help pay for rent, utilities and other food expenses. If the lower balance does not create a credit on the student's account, the cost for rent, utilities and other food expenses will be out-of-pocket to the family.

For additional information, please contact the Office of Financial Aid at financial_aid@pitzer.edu or 909.621.8208.

OFFICE OF STUDENT ACCOUNTS

Student Accounts, which reports to the Office of the Treasurer, is responsible for the billing and collection of tuition, fees and incidental charges. Student Accounts processes payments, credits, refunds and charges; generates monthly statements; and assists students and their families in understanding basic aspects of their student account. Incidental charges and credits originate from departments across the College and The Claremont Colleges, such as parking citations, library fines, student health services charges and student housing fines. Detailed information regarding student fees and payments may be found in the College catalog and the Student Accounts web page. For more information, contact the Office of Student Accounts at student_accounts@pitzer.edu or 909.621.8191.

FREQUENTLY ASKED QUESTIONS

Is there any monthly payment plan available if we cannot pay in full at the beginning of each semester?

Yes. Pitzer College offers an eight-month payment plan for the academic year (four payments per semester). A nominal fee is assessed each semester for enrollment in the Pitzer College payment plan. Families also have the option of prepaying each semester, prior to official billings in August and January, to reduce the monthly payments. The payment plan is not offered during the summer. Additional information can be found on the Student Accounts web page at www.pitzer.edu/student-accounts or by contacting the Office of Student Accounts directly by phone or email.



Can we pay with a credit/debit card?

Pitzer College does not accept credit/debit cards for student account payments.

Can you tell me what my student's financial aid package is?

Student Accounts cannot provide this information, but students can view their financial aid award via the student portal.

What is the associated student activities fee?

All students are charged the student activities fee. This fee is allocated by the Student Senate to student organizations including PAct (Pitzer Activities), which offers many activities for students on campus free of charge. This fee goes toward those activities.

Can the Office of Student Accounts change my student's meal plan?

Students can change their meal plans via MyCampus portal during the first week of classes. MyCampus portal is the system students use to access their student record.

Whom do I contact if I receive a residence hall damage charge on my student's account?

If there are questions regarding any damage charges, the student should contact their residence director.

Why was my student charged for insurance when they already have coverage?

Health insurance is mandatory for all students who have not shown proof of medical insurance to the Office of Student Affairs. If your student has medical coverage, contact the Office of Student Affairs at 909.607.2821.

How long does my student have to drop a course or lab and receive a refund?

All course and lab fees are final after the tenth day of each semester. There will be no refunds after the drop date, even if a student did not attend the class.



Whom do I contact for a copy of the Student Health Services charges that appear on my student's statement?

Student Health Services will give medical information to students only. Your student needs to request all billing information from Student Health Services at 909.621.8222.

Where should my student register a vehicle?*

Vehicles can be registered at the Campus Safety Office. All vehicles parked on The Claremont Colleges property must display a valid parking permit. Student parking permits are valid only on the campus for which they have been issued. All vehicles not displaying a valid parking permit are subject to being cited and/or towed. Please be aware that Campus Safety issues citations for non-registration and other parking violations. The vehicle registration fee and any fines for non-registration and parking violations will be charged to the student account. Any disputes must be handled through the Campus Safety Office. They are located at 150 East Eighth Street in the Pendleton Business Building. Their number is 909.621.8170.

*Please note that students are not permitted to have a car on campus for their first two years. Contact the Office of Student Affairs at 909.621.8241 for more information.

CLAREMONT CASH AND STUDENT HEALTH SERVICES

CLAREMONT CASH

Claremont Cash can be used to purchase both food and non-food items throughout The Claremont Colleges, as well as at local merchants in and around Claremont. All students of The Claremont Colleges have a Claremont Cash account established as soon as the student's ID card is created.

Each residence hall is equipped with laundry machines, which accept Claremont Cash or quarters. Washing costs \$1.25 and drying costs \$1.00. Students must provide their own laundry detergent and supplies.

For more information about Claremont Cash, please call 909.607.2273 or email connection@claremont.edu.



STUDENT HEALTH SERVICES

Tranquada Student Services Building
757 College Way
909.621.8222
www.services.claremont.edu/shs
For after-hours emergencies, call Campus Safety at 909.607.2000.

A completed entrance health history/physical examination form is required to be on file for all undergraduates and necessary to secure a scheduled appointment.

Appointments are available to students at no charge. Students are responsible for clinic charges such as medicine, laboratory tests, special procedures and supplies, x-rays, and physical exams for sports and study abroad. Students may pay these charges at the time of service or they make payments directly to Student Health Services within 30 days. A receipt is provided so that students can submit a claim to their insurance carrier for reimbursement. After 30 days, the charges will be transferred to the student's account.

Student Health Services is an appointment-based clinic. Students are encouraged to call early in the morning for "same day" appointments or may call and speak with the nurse for our "nurse advice" line or urgent care matters. Please note there is a \$15 fee for students who miss their appointments or do not cancel within a two-hour period.

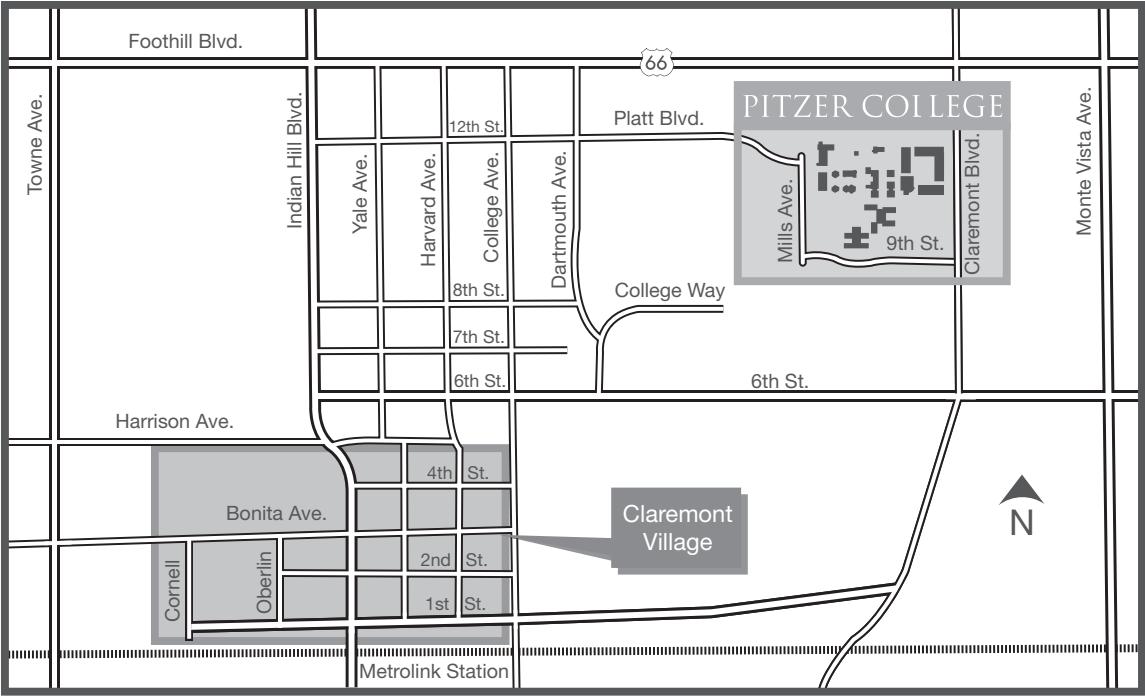
Referral for consultation and treatment by specialists in all fields within the community can be arranged by Student Health Services, but the fees are not paid by The Claremont Colleges.

All students are required to have medical insurance.

PITZER COLLEGE MAP

- 1. Broad Center**
 - Advancement Office
 - Classrooms
 - Faculty Offices
 - Nichols Gallery
 - Performance Space
 - President's Office
- 2. Broad Hall**
 - Anthropology Resource
 - Apprenticeship
 - Claremont International Studies
 - Education Project (CISEP)
 - Claremont Infant Study Center
 - Classrooms
 - Computer Classrooms
 - Cross Cultural Anthropology
 - Faculty Offices
 - Fletcher Jones Intercultural & Language Lab
 - Memory & Aging Lab
 - Paleoanthropology Lab
 - Psychology Labs
 - Social Science Interview Room
- 3. Gold Student Health & Wellness Center**
- 4. Avery Hall**
 - George C.S. Benson Auditorium
 - Classrooms
 - Faculty Offices
 - Faculty & Staff Lounge
 - Institutional Research & Assessment
- 5. Fletcher Hall**
 - Classrooms
 - Faculty Offices
 - Institute for Global/Local Action & Study (IGLAS)
 - Registrar
 - Study Lounge
- 6. Scott Hall**
 - Career Services
 - Community Engagement Center (CEC)
 - Dean of Faculty
 - Faculty Offices
 - Information Technology
 - Photo Wet Lab
 - Student Affairs
- 7. Bernard Hall**
 - Classrooms
 - Computer Labs
 - Duplicating Services
 - Faculty Offices
 - Pit-Stop Café
 - Redford Conservancy Office
 - Study Lounge
- 8. Stephen L. Glass Commencement Plaza & Recreation Area**
- 9. McConnell Center**
 - Apron
 - Art Studios
 - Audio-Visual Services
 - Dining Hall
 - Facilities & Campus Services
 - Financial Aid
 - Founders Room
 - Frederick Salathé Atrium
 - Human Resources
 - Living Room
 - Music Practice Room
 - Private Dining Room
 - Salathé Gallery
 - Student Accounts
 - Treasurer's Office
- 10. Holden Garden**
- 11. Mead Hall**
 - Center for Asian Pacific American Students (CAPAS)
 - Living Room
 - Lucian Marquis Library
 - New Resources Lounge
 - Communications Office
 - Rabbit Hole
 - Residential Suites
 - Study Areas
 - Writing Center & Office
- 12. Pellissier Mall (The Mounds)**
- 13. Brant Clock Tower**
- 14. Grove House**
 - Arboretum
 - Barbara Hinshaw Memorial Gallery
 - Bert Meyers Poetry Room
 - Ecology Center
 - Grove House Kitchen
 - Meeting Rooms
 - Class of '68 Outdoor Classroom
 - Womyn's Center
- 15. East Mesa Parking**
- 16. Holden Parking**
- 17. Sanborn Parking**
- 18. John R. Rodman Arboretum**
- 19. Pitzer Hall**
 - Smith Family Admission Plaza & Brick Courtyard
 - Admission Office
 - Agnes Moreland Jackson
 - Diversity & Intercultural Understanding
 - Learning Community
 - Community Living Room
 - Faculty Apartment
 - Green Roof Garden
 - Residential Rooms
 - Study Rooms & Lounges
- 20. Sanborn Hall**
 - Community Living Room
 - Faculty & Staff Apartments
 - Residential Rooms
 - Study Rooms & Lounges
- 21. Atherton Hall**
 - Art Faculty Offices
 - Art Galleries Curator Office
 - Art Studios
 - Campus Mail Center
 - Community Living Room
 - Electronic Seminar Room
 - Jumpstart
 - Lenzner Family Art Gallery
 - Living Room
 - Residential Rooms
 - Staff Apartment
 - Study Rooms & Lounges
- 22. Green Bike Program**
- 23. Founding Faculty Outdoor Amphitheater**
- 24. W.M. Keck Science Center**
 - Classrooms
 - Faculty Offices
 - Laboratories
 - Lecture Hall
- 25. W.M. Keck Science Center II**
- 26. Greenhouse**

THE CITY OF CLAREMONT



CLAREMONT FACTS AND FIGURES*

The City of Claremont, founded in 1887, has a population of 34,926 and covers 14.14 square miles. Claremont is 1,150 feet above sea level, with an average annual temperature of 63° F and an average rainfall of 17.3 inches a year. Claremont has 23 city-owned parks and sports fields, with 1,788 acres of public parkland of which 1,769 acres are wilderness. The city has been a winner of the National Arbor Day Association's Tree City USA award for over 20 years. Claremont's infrastructure includes 128 miles of surfaced streets, 231 miles of sidewalks, 4,000 street signs, 2,596 park and street lights and 24,187 city trees.

*According to 2010 census and Claritas 2010

CLAREMONT AREA MAP

For a detailed map of shops, restaurants and parking, please visit www.thevillageclaremont.com/vilmap.html.

LOCAL RESOURCES

Banks

Bank of America
339 Yale Avenue
Claremont, CA
909.865.2424

California Bank & Trust
102 Yale Avenue
Claremont, CA
909.624.9091

Chase
400 N. Indian Hill Boulevard
Claremont, CA
909.624.9001

Community Commerce Bank
390 W. Foothill Boulevard
Claremont, CA
909.625.7891

First City Credit Union
250 W. First Street #150
Claremont, CA 91711
800.944.2200

Pacific Western Bank
223 W. Foothill Boulevard
Claremont, CA
909.621.0519

U.S. Bank
393 W. Foothill Boulevard
Claremont, CA
909.625.8655

Wells Fargo
203 Yale Avenue
Claremont, CA
909.398.1140

Grocery Stores

Sprouts Farmers Market
835 W. Foothill Boulevard
Claremont, CA
909.267.1049

Stater Brothers
1055 W. Foothill Boulevard
Claremont, CA
909.624.0619

Trader Joe's
475 W. Foothill Boulevard
Claremont, CA
909.625.8784

Whole Foods 365
2153 W. Baseline Road
Upland, CA
909.579.2670

Vons
550 E. Baseline Road
Claremont, CA
909.621.4644

Hospitals

Central Urgent Medical Care
8891 Central Avenue
Montclair, CA
909.297.3361

Chino Valley Medical Center
5451 Walnut Avenue
Chino, CA
909.464.8600

Kaiser Medical Center
2295 S. Vineyard Ave
Ontario, CA 91761
909.724.5000

Pomona Valley Hospital Medical Center
1798 N. Garey Avenue
Pomona, CA
909.865.9500

Pomona Valley Health Center
& Urgent Care Center
1601 Monte Vista Avenue, Suite 100
Claremont, CA 91711
909.865.9977

Rancho San Antonio Medical Center
7777 Milliken Avenue
Rancho Cucamonga, CA
909.948.8000

San Antonio Community Hospital
999 San Bernardino Road
Upland, CA
909.985.2811

Hotels

Aloft Ontario-Rancho Cucamonga
10480 Fourth Street
Rancho Cucamonga, CA
877.GO.ALOFT
909.484.2018
10 miles from campus

DoubleTree By Hilton Claremont
555 W. Foothill Boulevard
Claremont, CA
909.626.2411
1.6 miles from campus

Holiday Inn Express Hotel & Suites Ontario
2280 South Haven Avenue
Ontario, CA
909.930.5555
12 miles from campus

Hotel Casa 425
425 W. First Street
Claremont, CA
909.624.2272
1.5 miles from campus

Ontario Gateway Hotel
2200 E. Holt Boulevard
Ontario, CA
800.284.8811
909.975.5000
8 miles from campus

Sheraton Fairplex Hotel
601 W. McKinley Avenue
Pomona, CA
866.716.8130
909.622.2220
5 miles from campus

Sheraton Ontario Airport Hotel
429 N. Vineyard Avenue
Ontario, CA
800.582.2946
909.937.8000
8 miles from campus

Restaurants

42nd Street Bagel
225 Yale Avenue
Claremont, CA
909.624.7655

85°C Bakery Cafe
Auto Center Drive
Claremont, CA
909.399.0085

Back Abbey
128 N. Oberlin Avenue
Claremont, CA
909.625.2642

Bardot
206 W. Bonita Avenue
Claremont, CA
909.621.2255

Bua Thai Cuisine
450 W. First Street
Claremont, CA
909.626.6666

Buca di Beppo
505 W. Foothill Boulevard
Claremont, CA
909.399.3287

Dr. Grubb's
373 W. Bonita Avenue
Claremont, CA
909.621.6200

Espiau's
109 Yale Ave
Claremont, CA
909.621.1818

Heroes Restaurant
131 Yale Avenue
Claremont, CA
909.621.6712

In-N-Out
2098 Foothill Blvd
La Verne, CA
800.786.1000

Le Pain Quotidien
175 N. Indian Hill Boulevard
Claremont, CA
909.480.4771

The Press
129 Harvard Avenue
Claremont, CA
909.625.4808

Saca's Mediterranean Cuisine
248 W. Second Street
Claremont, CA
909.624.3340

Sanamluang Cuisine
710 S. Indian Hill Boulevard
Claremont, CA
909.621.0904

Spaggi's
1651 W. Foothill Blvd
Upland, CA
909.579.0497

Tutti Mangia Italian Grill
102 Harvard Avenue
Claremont, CA
909.625.4669

Union on Yale
232 Yale Avenue
Claremont, CA
909.833.5104

Viva Madrid
225-B Yale Avenue
Claremont, CA
909.624.5500

For a comprehensive list of restaurants in the Claremont Village, visit www.thevillageclaremont.com.

Retail Stores

Best Buy
8960 Central Avenue
Montclair, CA
909.621.7156

CVS/Pharmacy
775 E. Foothill Boulevard
Pomona, CA
909.621.6708

Hendricks Pharmacy
137 N. Harvard Avenue
Claremont, CA
909.624.1611

Home Depot
250 S. Mountain Avenue
Upland, CA
909.949.4119

IKEA
848 S. Barranca Avenue
Covina, CA
626.732.4532

Lowe's Home Improvement
1659 W. Foothill Boulevard
Upland, CA
909.982.4795

Staples
300 S. Mountain Avenue
Upland, CA
909.981.9039

Target
9052 Central Avenue
Montclair, CA
909.624.5717

Walmart
1540 W. Foothill Boulevard
Upland, CA
909.920.4021

Shopping Centers

Montclair Place
5060 E. Montclair Plaza Lane
Montclair, CA
909.626.2442

Ontario Mills Shopping Center
1 Mills Circle
Ontario, CA
909.484.8301

Victoria Gardens
12505 N. Main Street
Rancho Cucamonga, CA
909.463.2830

Storage Space

All American Mini Storage
711 S. Mills Avenue
Claremont, CA
909.621.7867

StorQuest Self Storage
454 W. Baseline Road
Claremont, CA
909.784.1121

Extra Space Storage
775 S. Mills Avenue
Claremont, CA
909.622.6507

Reliable Self Storage
1495 Andrew Drive
Claremont, CA
909.625.5060

Metrolink Trains

The Metrolink rail system provides easy transport to various activity centers. Ride into downtown Los Angeles' Union Station and connect with buses and trains that take you to a number of locations in the Los Angeles area, or simply enjoy downtown Los Angeles. For a full schedule and information, please visit www.metrolinktrains.com.

Ground Transportation

Rental Car

Alamo: 800.327.9633
Avis: 800.831.2847
Enterprise: 800.325.8007
National: 800.227.7368
Thrifty: 800.367.2277

Airport Shuttle Service

Airport shuttle services are available to The Claremont Colleges and nearby hotels. Prices may vary depending on type of van service, number of passengers and total bags.

Express Shuttle: 800.427.7483
Prime Time Shuttle: 800.RED.VANS (733.8267)
SuperShuttle: 800.BLUE.VAN (258.3826)

We recommend that parents and students use the Ontario International Airport (ONT). This airport is located about 15 minutes from campus. Los Angeles International Airport (LAX) is approximately one hour from campus.

This is not a complete listing of area resources and does not reflect an endorsement by Pitzer College.

PLACES OF INTEREST

Activities in the Southern California Area

For additional information, visit www.discoverlosangeles.com. Visit The Claremont Colleges calendar at www.collegescalendar.org.

Museums & Arts Venues

The Pitzer College Art Galleries
Claremont, CA
909.607.8797
www.pitzer.edu/galleries

California African American Museum
Los Angeles, CA
213.744.7432
<https://caamuseum.org>

The Getty Center
West Los Angeles, CA
310.440.7300
www.getty.edu

Huntington Library, Art Gallery & Botanical Garden
San Marino, CA
626.405.2100
www.huntington.org

Japanese American National Museum
Los Angeles, CA
213.625.0414
www.janm.org

Los Angeles County Museum of Art
Los Angeles, CA
323.857.6000
www.lacma.org

Museum of Contemporary Art
Los Angeles, CA
213.626.6222
www.moca.org

Museum of Tolerance
West Los Angeles, CA
310.772.2505
www.museumoftolerance.com

Norton Simon Museum
Pasadena, CA
626.449.6840
www.nortonsimon.org

Pacific Asia Museum
Pasadena, CA
626.449.2742
www.pacificasiamuseum.org

Rancho Santa Ana Botanic Garden
Claremont, CA
909.625.8767
www.rsabg.org

Performing Arts

Ahmanson Theater
Los Angeles, CA
213.628.2772
www.centertheatregroup.org/visit/ahmanson-theatre

Hollywood Bowl
Los Angeles, CA
323.850.2000
www.hollywoodbowl.com

Mark Taper Forum
Los Angeles, CA
213.628.2772
www.centertheatregroup.org/visit/mark-taper-forum

Pantages Theater
Hollywood, CA
323.468.1770
www.hollywoodpantages.com

Pasadena Playhouse
Pasadena, CA
626.356.7529
www.pasadenaplayhouse.org

Walt Disney Concert Hall
Los Angeles, CA
323.850.2000
www.laphil.com

NOTES

NOTES

NOTES

PITZER COLLEGE|Store



Pitzer College merchandise will be available for sale in the McConnell Center Living Room from 9 a.m. to 5 p.m. during Parent Orientation and can be purchased online at **www.pitzer.edu/store**.



Family Weekend

Save the Date

February 14-17, 2020



PITZER
COLLEGE

Office of Parent Relations

1050 North Mills Avenue, Claremont, CA 91711

909.607.4030

parents@pitzer.edu

www.pitzer.edu/parents

www.facebook.com/groups/PitzerParentAssociation