

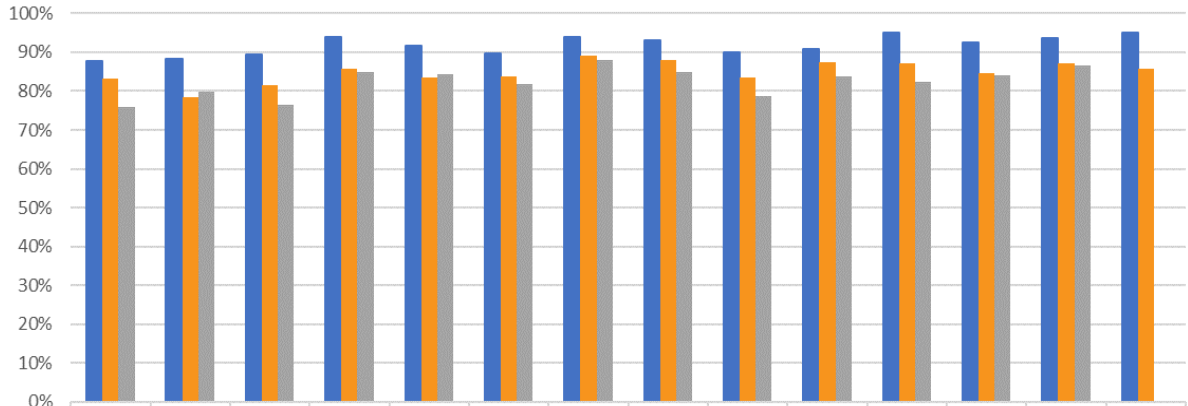
Retention

Sources:

Registrar's Office

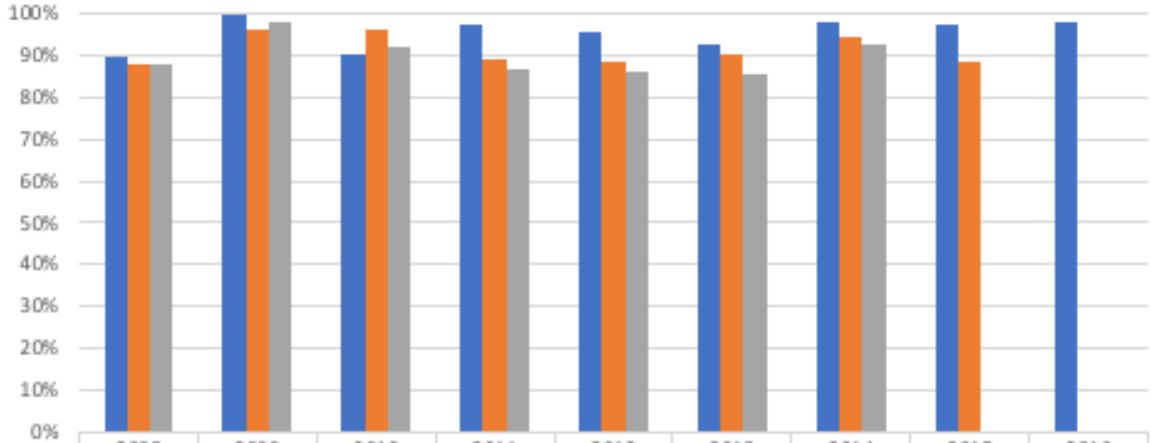
Data Warehouse

Fall-to-Fall Cohort Retention Rates Entering Cohorts from 2003-2016



For the entering cohort of Fall 2015, the national average for first to second year retention at private, non-profit colleges with admit rates of 25% or less was 95% (NCES, 2018).

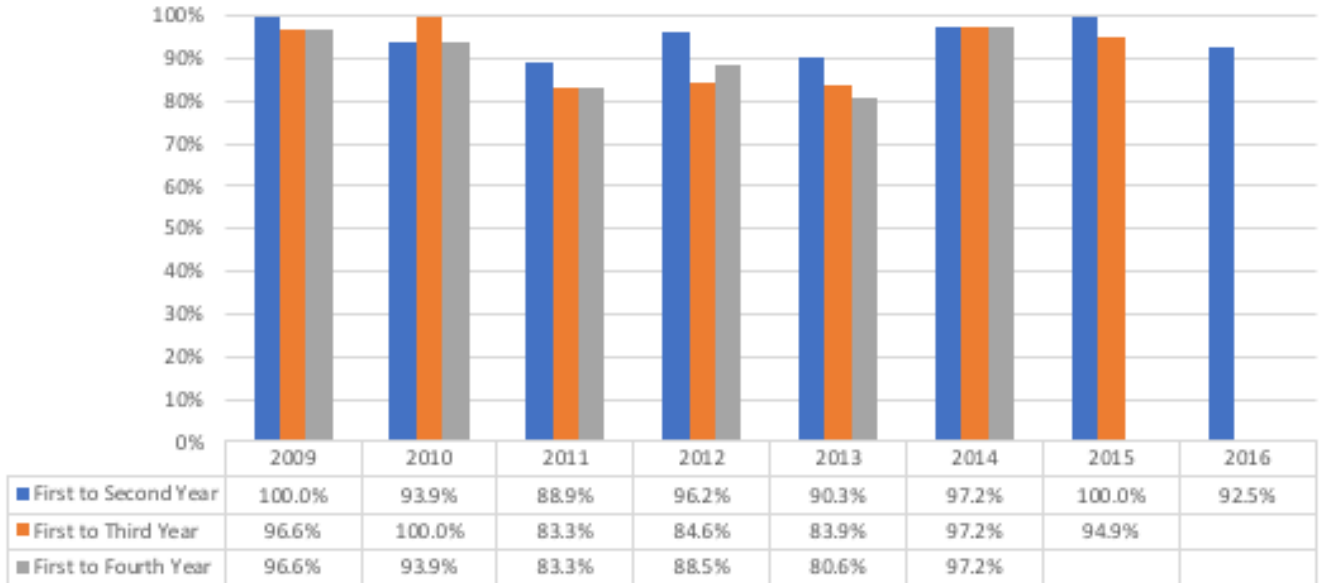
Fall-to-Fall Cohort Retention Rates Entering Cohorts from 2008-2016: Pell Grant Recipients



| | 2008 | 2009 | 2010 | 2011 | 2012 | 2013 | 2014 | 2015 | 2016 |
|------------------------|-------|--------|-------|-------|-------|-------|-------|-------|-------|
| ■ First to Second Year | 89.8% | 100.0% | 90.4% | 97.3% | 95.5% | 92.7% | 98.1% | 97.7% | 97.7% |
| ■ First to Third Year | 87.8% | 96.2% | 96.2% | 89.2% | 88.6% | 90.2% | 94.3% | 88.4% | |
| ■ First to Fourth Year | 87.8% | 98.1% | 92.3% | 86.5% | 86.4% | 85.4% | 92.5% | | |

Students who received a Pell Grant at any point during their undergraduate enrollment are considered part of the cohort.

Fall-to-Fall Cohort Retention Rates Entering Cohorts from 2009-2016: First-Generation Students



Note: Pitzer College did not consistently collect First-Generation student data prior to Fall 2013.