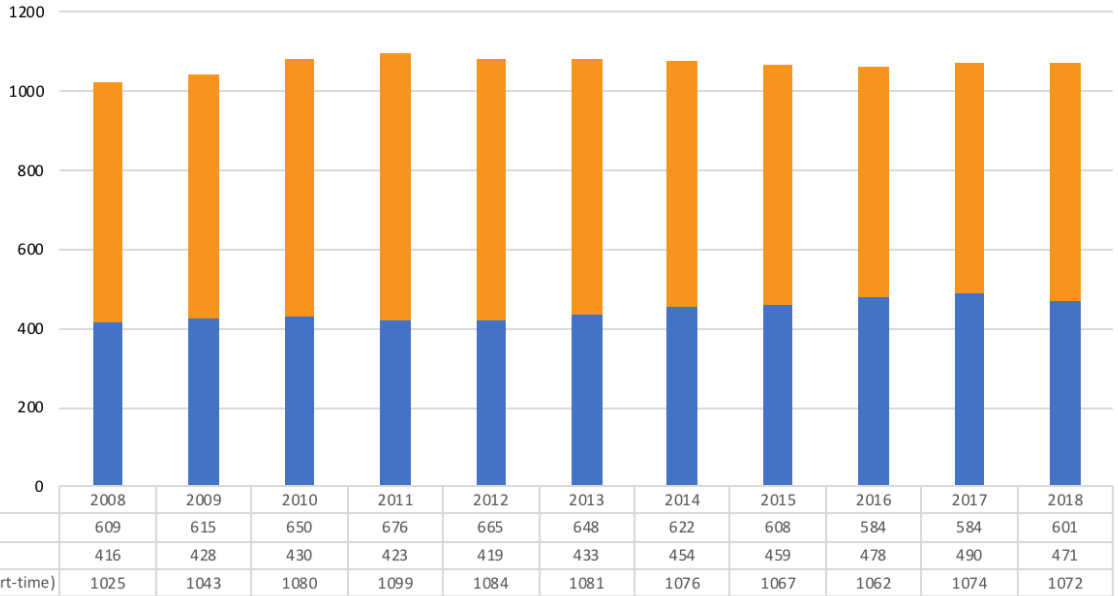


Enrolled Students

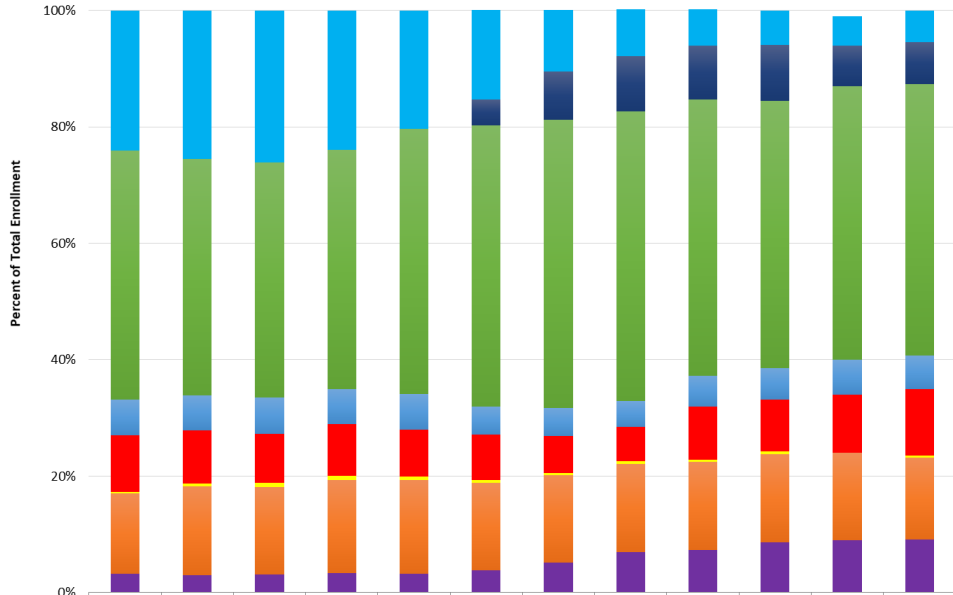
Source:

Integrated Postsecondary Education Data System
Data Warehouse

Fall Enrollment: Total Headcount of Degree-Seeking Students (Full-time & Part-time) 2008-2018

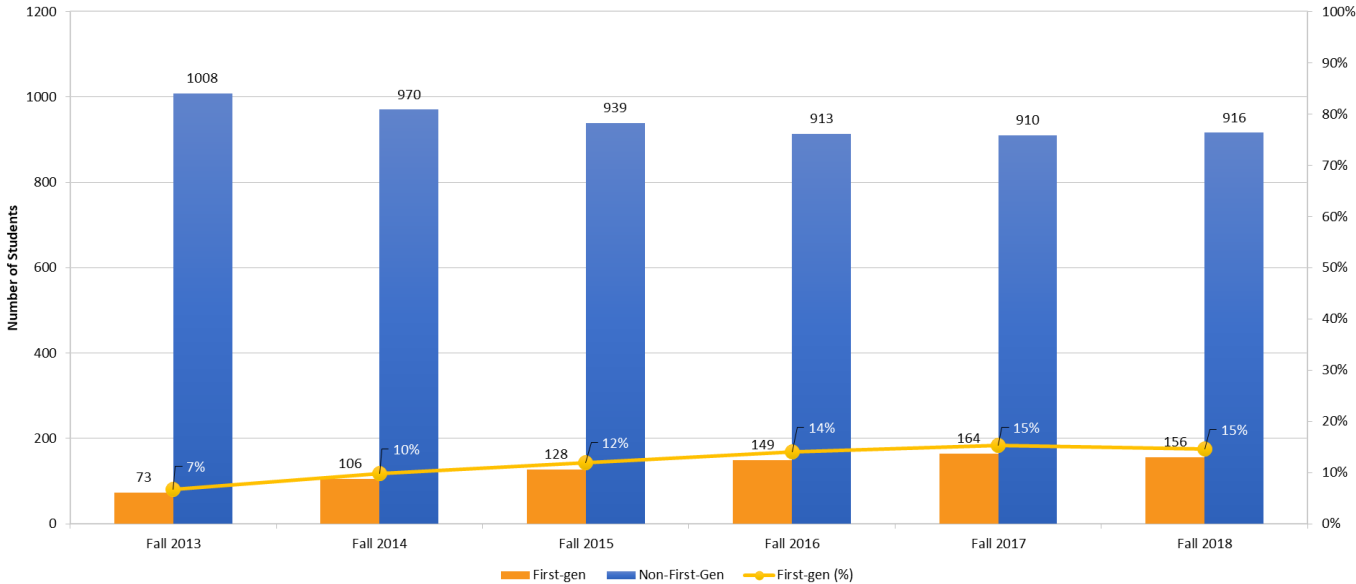


Total Enrollment: Percentage Distribution by Race/Ethnicity Fall 2007-2018



	2007	2008	2009	2010	2011	2012	2013	2014	2015	2016	2017	2018
Race and ethnicity unknown	24.0%	25.5%	26.2%	24.0%	20.3%	15.4%	10.6%	8.0%	6.2%	5.9%	5.0%	5.5%
Two or more races	0.0%	0.0%	0.0%	0.0%	0.0%	4.4%	8.2%	9.5%	9.3%	9.6%	7.0%	7.2%
White	42.8%	40.7%	40.4%	41.1%	45.6%	48.3%	49.5%	49.8%	47.5%	46.0%	47.0%	46.6%
Black or African American	6.1%	6.0%	6.2%	6.0%	6.1%	4.8%	4.8%	4.5%	5.2%	5.4%	6.0%	5.8%
Asian/Pacific Islander/Native Hawaiian	9.7%	9.2%	8.4%	8.8%	8.1%	7.7%	6.4%	5.9%	9.1%	8.9%	10.0%	11.4%
American Indian or Alaska Native	0.3%	0.5%	0.7%	0.7%	0.5%	0.6%	0.4%	0.5%	0.5%	0.5%	0.0%	0.3%
Hispanic/Latinx	13.8%	15.2%	15.1%	16.0%	16.1%	15.0%	15.1%	15.1%	15.1%	15.3%	15.0%	14.1%
Nonresident alien	3.2%	3.0%	3.1%	3.3%	3.3%	3.8%	5.1%	7.0%	7.3%	8.6%	9.0%	9.1%

Comparison of Total Headcount Enrollment: First-Generation vs. Non-First-Generation Students Fall 2013 - Fall 2018



Note: Pitzer College did not consistently collect First-Generation student data prior to Fall 2013.

Total Headcount and Percentage of Students Receiving Scholarships and Grants (Excluding Loans) Academic Years 2008-2018

