



## RETENTION & GRADUATION RATES

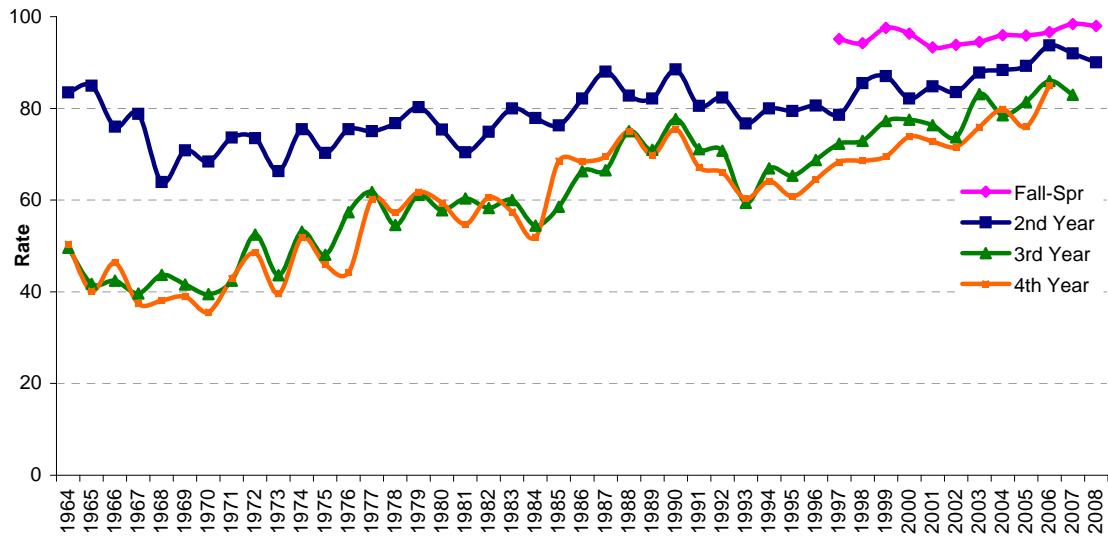
Entering Year	Cohort #	Retention Rate				Graduation Rate		
		Fall to Spr %	2nd Yr %	3rd Yr %	4th Yr %	4th Yr %	5th Yr Cumulative %	6th Yr Cumulative %
1983	155	80	60	57	49	59	63	
1984	158	78	54	52	51	59	61	
1985	181	76	59	69	54	64	65	
1986	190	82	66	68	58	64	66	
1987	200	88	67	70	63	72	72	
1988	168	83	75	75	67	74	75	
1989	179	82	71	70	66	70	70	
1990	139	88	78	76	68	72	73	
1991	180	81	71	67	58	67	67	
1992	147	82	71	66	59	65	67	
1993	219	77	59	60	49	58	60	
1994	145	80	67	64	55	64	66	
1995	199	79	65	61	52	59	59	
1996	211	81	69	64	56	65	66	
1997	224	95	79	72	64	69	71	
1998	207	94	86	73	62	71	71	
1999	246	98	87	77	61	68	70	
2000	218	96	82	78	67	75	76	
2001	224	93	85	76	65	70	71	
2002	243	94	84	74	64	69	70	
2003	237	95	88	83	70	78	80	
2004	223	96	88	78	74	78		
2005	242	96	89	81	75			
2006	240	97	94	86	85			
2007	253	98	92	83				
2008	264	98	90					
2009	255							

This is a summary of Pitzer's first-time full-time Freshman (First Year students) retention and graduation rates. The highlighted figures represent the highest rates in Pitzer's history. All occurred in recent years. The figures do not include transfer or part-time students.

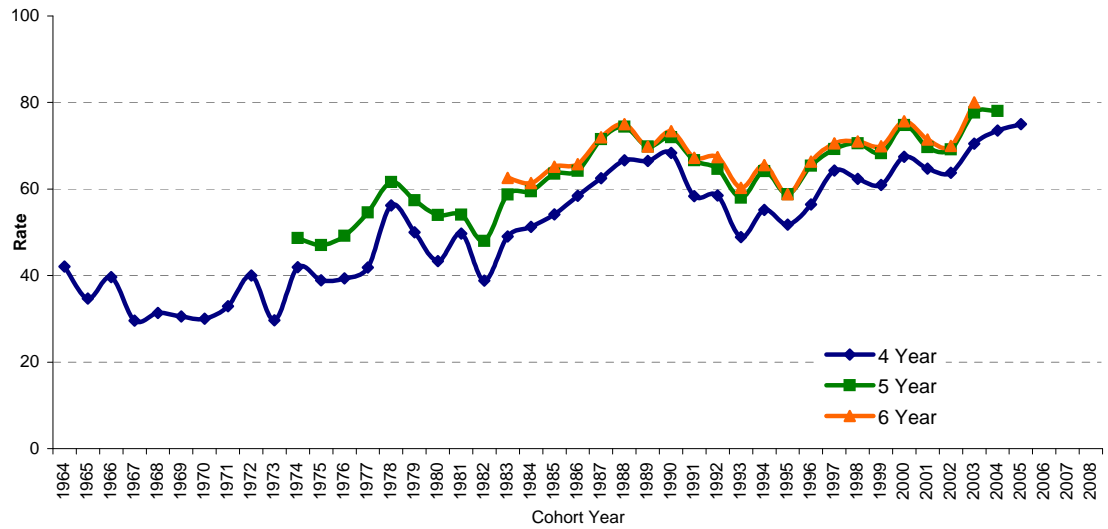
Source: Registrar's Office  
Updated 10-28-2009



### Retention Rate First Time Full Time First Years



### Graduation Rate First-Time Full-Time Freshman



Entering Year	Cohort #	Retention Rate			Graduation Rate Cumulative		
		2nd Year	3rd Year	4th Year	4 Year	5 Year	6 Year
<b>Native American</b>							
2001	1	100	100	100	100	100	100
2002	1	100	100	100	100	100	100
2003	1	100	100	0	0	0	0
2004	1	100	100	100	100	100	
2005	1	100	100	100	0		
2006	1	100	0	0			
2007							
2008	2	100					
2009	2						
<b>Asian American/Pacific Islander</b>							
2001	20	90	75	75	75	80	85
2002	24	92	83	71	71	75	75
2003	27	104	100	81	93	93	93
2004	25	92	84	76	68	72	
2005	19	79	79	68	63		
2006	23	96	91	74			
2007	26	96	85				
2008	19	84					
2009	21						
<b>African, African American</b>							
2001	14	100	93	64	57	64	64
2002	9	89	67	67	44	56	56
2003	16	100	88	88	63	81	81
2004	13	85	77	77	77	77	
2005	13	92	92	92	69		
2006	20	95	65	80			
2007	13	100	92				
2008	16	94					
2009	11						
<b>Latino/a</b>							
2001	23	74	70	74	61	65	65
2002	31	94	94	87	68	77	77
2003	30	90	87	80	80	83	83
2004	17	88	88	88	88	88	
2005	46	96	89	85	78		
2006	27	93	89	89			
2007	29	93	93				
2008	43	98					
2009	41						
<b>White</b>							
2001	107	88	80	78	71	74	75
2002	107	89	72	71	66	71	72
2003	95	88	80	77	65	74	76
2004	113	89	79	79	73	79	
2005	92	87	75	70	75		
2006	115	92	85	87			
2007	115	90	80				
2008	94	89					
2009	93						

Entering Year	Cohort #	Retention Rate			Graduation Rate Cumulative		
		2nd Year	3rd Year	4th Year	4 Year	5 Year	6 Year
<b>Female</b>							
2001	147			64	63	67	69
2002	135		70	67	64	68	68
2003	132	86	80	78	73	79	81
2004	133	83	74	72	72	74	
2005	165	88	83	75	78		
2006	139	95	86	83			
2007	149	90	83				
2008	163	91					
2009	159						
<b>Male</b>							
2001	77			74	71	74	75
2002	108		76	75	63	70	72
2003	105	62	84	73	67	76	79
2004	90	97	84	86	76	84	
2005	77	91	78	75	69		
2006	101	92	85	86			
2007	104	93	84				
2008	101	88					
2009	96						
<b>Non-Residents</b>							
2001							
2002	13			54	62	69	69
2003	8		75	75	38	63	75
2004	4	100	50	25	50	50	
2005	3	100	100	33	100		
2006	8	100	100	88			
2007	14	71	57				
2008	9	89					
2009	8						
<b>Unknown Ethnicity</b>							
2001							
2002	56			66	59	63	64
2003	60		73	68	72	78	82
2004	50	84	74	76	74	78	
2005	68	90	82	75	78		
2006	45	98	93	87			
2007	56	93	89				
2008	81	86					
2009	79						

Note: Some old data contain missing information.

Updated 11-16-2009