

## VPN Setup and Access Network Drives Remotely – Win 7

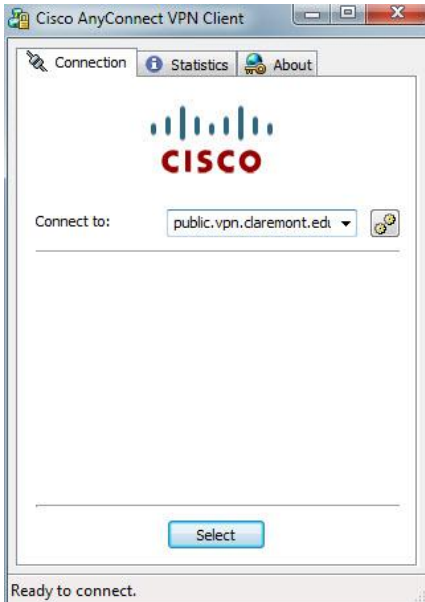
### 1. Install VPN software

Run the 'AnyConnect-win-2.5.3046-pre-deploy-k9' file

Follow the prompts and hit Next/Accept all defaults.

### 2. Setup VPN Software

Go to Start button > All Programs > Cisco AnyConnect VPN Client



Under 'Connect to:' enter **public.vpn.claremont.edu**



Choose Pitzer from Group: drop down menu

Enter your Pitzer username and password

Hit Accept and Yes for any windows that follow.



The Cisco AnyConnect icon will appear in the system tray

You can right click on it to disconnect.

### 3. Connect to a Network Drive

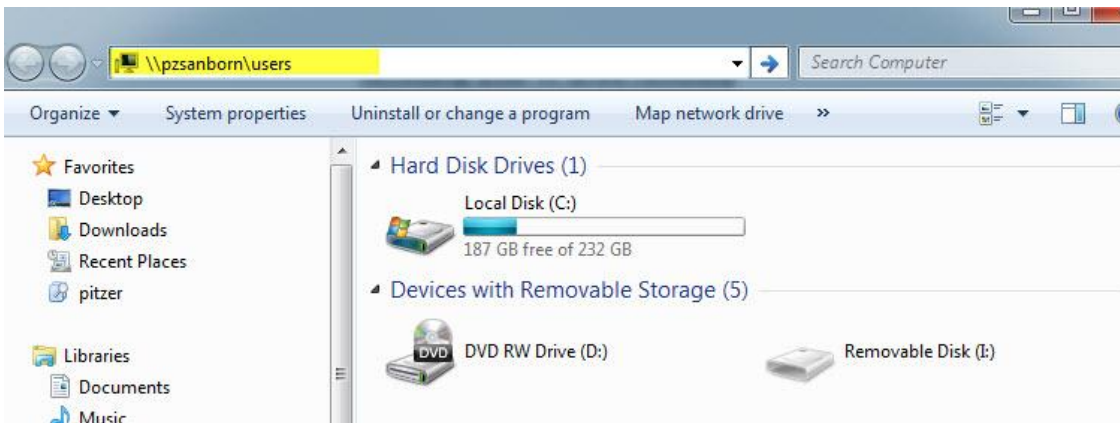
*NOTE: You must be connected to the VPN in order to access the share drives.*

Click on Computer icon from your desktop.



Double click in the address bar and type in the share drive you are trying to connect to.

Follow the example below.



Staff H: drive - <\\pzsborn.pitzer.edu\users\yourusername>

Faculty H: drive - <\\pzacad.pitzer.edu\faculty\yourusername>

Faculty general share G: drive - <\\pzacad.pitzer.edu\general-classes>

Staff general share G: drive - <\\pzadmin.pitzer.edu\generalshare>

Staff and Faculty department shares S: drive – <\\pzsborn.pitzer.edu> then select your department share folder.