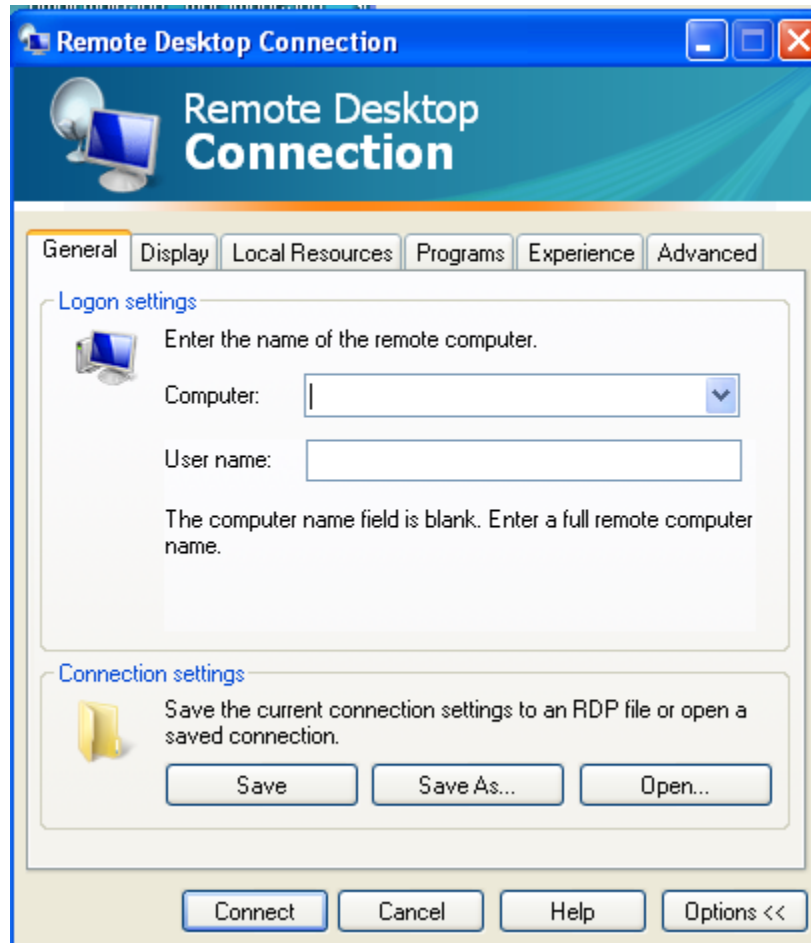


Remote Desktop Setup - Windows

Note: the VPN must be installed and setup in order for you to use this feature. Refer to VPN Setup instructions on previous page.

Run Remote Desktop Connection by going to:

Start > Programs > Accessories > Remote Desktop Connection



Enter the computer name of your desktop at work. (i.e. 02148-BE-105.pitzer.edu)

Click the "Connect" button

Login using your Pitzer username and password. (i.e. pitzer\username)

Your Pitzer office desktop should appear. Work with it like you would as if you're sitting right there at your office desk.