

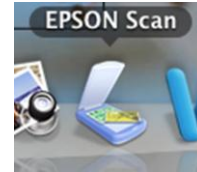
Using Epson Perfection V500 Photo Scanner.

You can scan images from the Epson scan application, or directly from Photoshop or Acrobat Pro

1. Using the Epson Scan Application



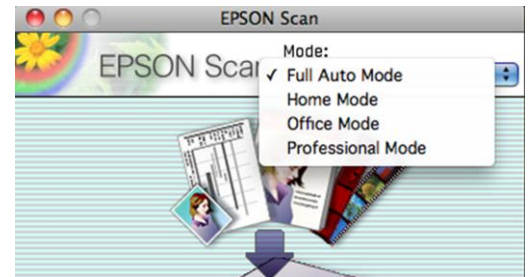
Window: Epson Scan on Desktop



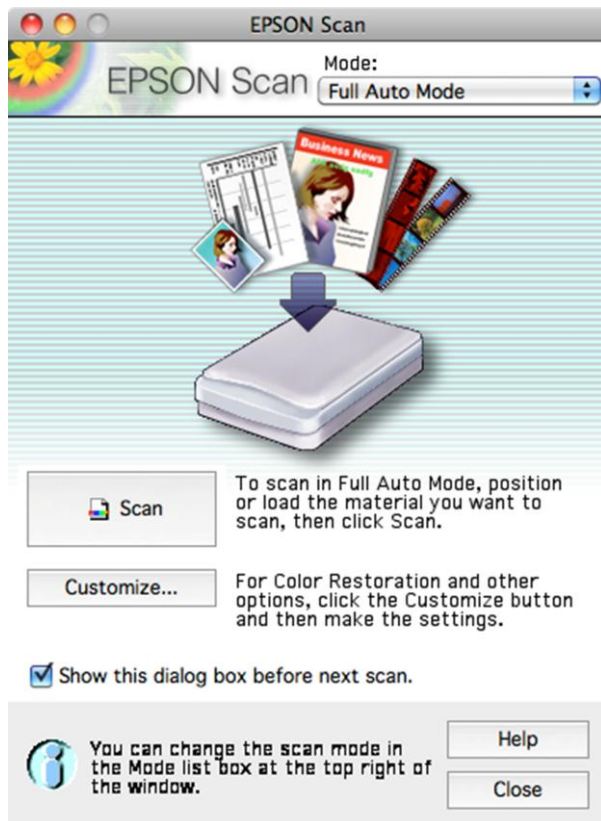
Mac: Epson Scan on Dock

In the Epson scan application, there are four scan modes from automatic to more advanced:

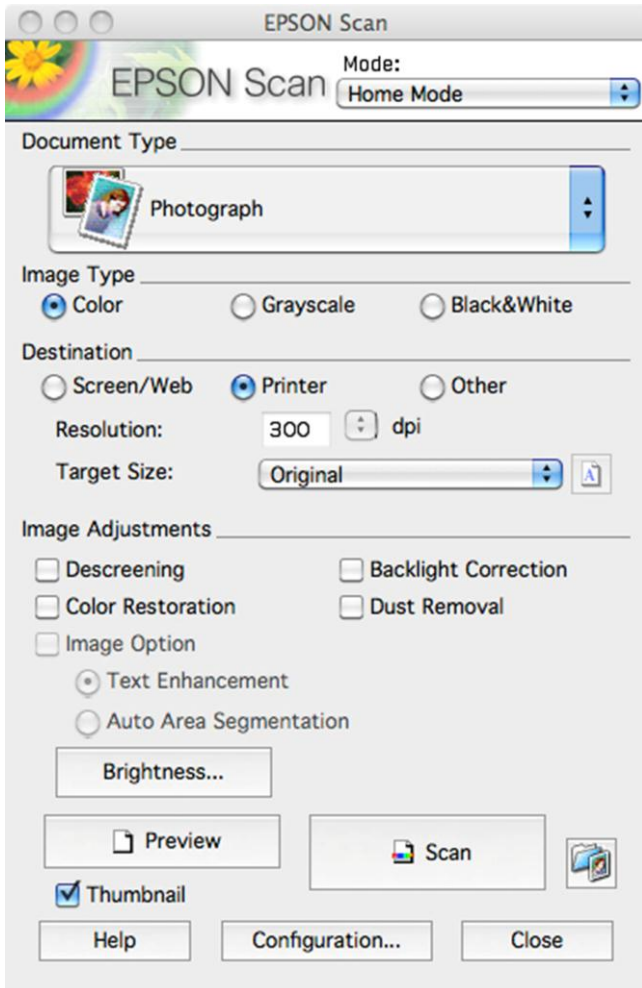
Full Auto	fully automatic, no scan options
Home (recommended)	basic options, basic image adjustment
Office	advanced options, advanced image adjustment
Professional	expert options, extensive image adjustments and color control



Full Auto Mode: click **Scan** to scan image



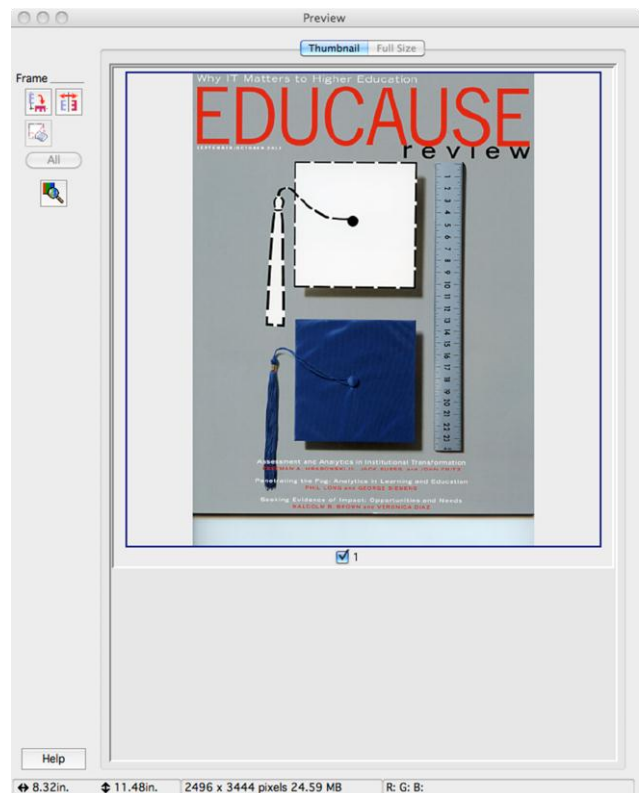
Home Mode*: select your options, click on **Preview** to preview image before scan, then click **Scan** to begin scan.



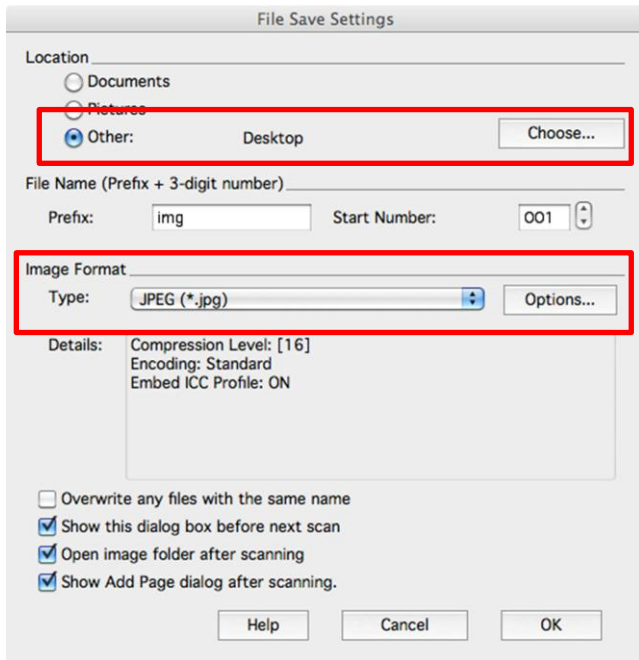
*Note: **Home Mode** is recommended mode for typical image scanning. Basic options for image adjustments and image resolution. In most cases default settings are suitable.

Use **Office Mode** or **Professional Modes** for more advanced image and color adjustment and control. These modes are typically for advanced users.

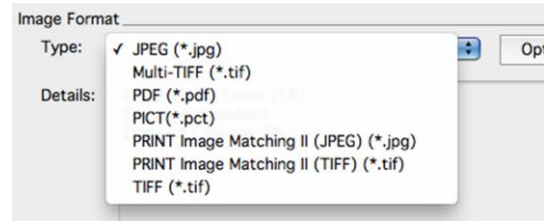
Depending on the type of image, Preview may allow you to select part or the entire image, rotate and zoom.



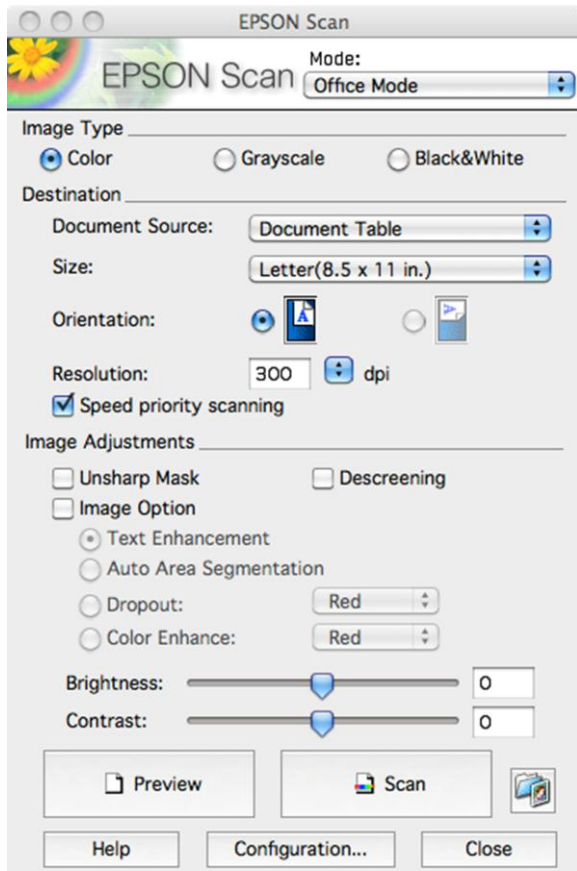
When saving scan, select **Other** and choose **Desktop** or your network share as your destination location to save the file for ease of access. Then click OK.



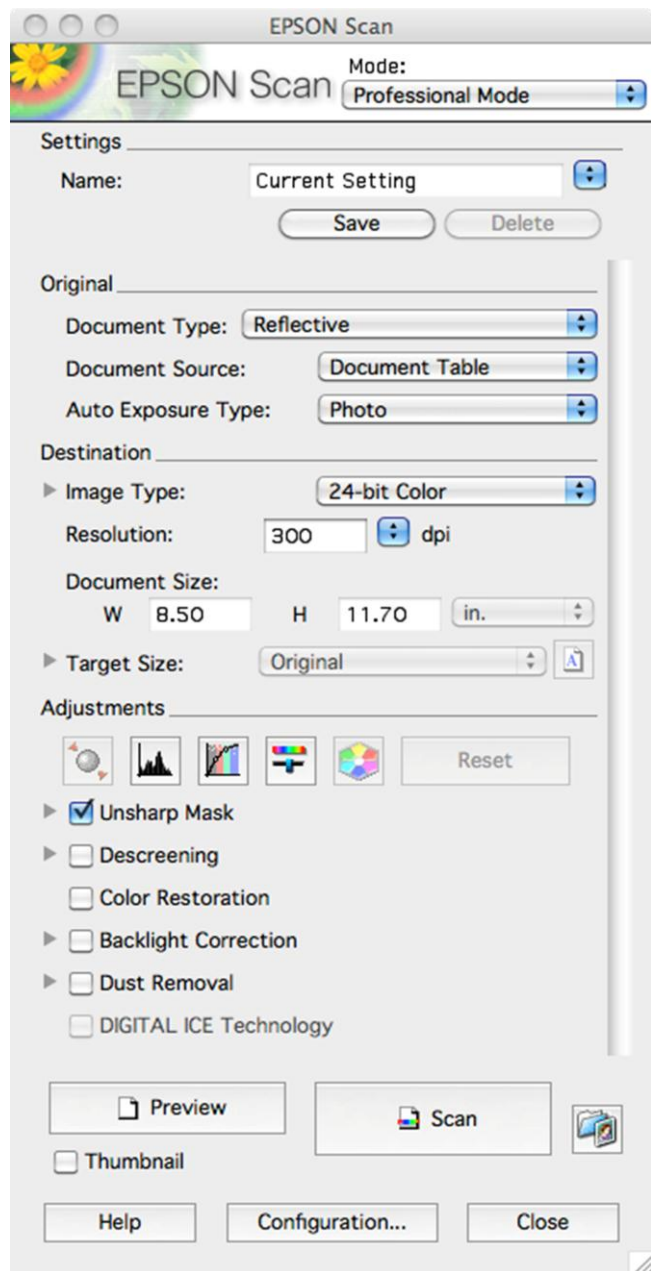
Change the **Image Format** to desired file format, **JPEG** for images, **PDF** or other formats.



Office Mode: select your options, click on **Preview** to preview image before scan, click **Scan** to begin scan. All save options are same as **Home Mode**.

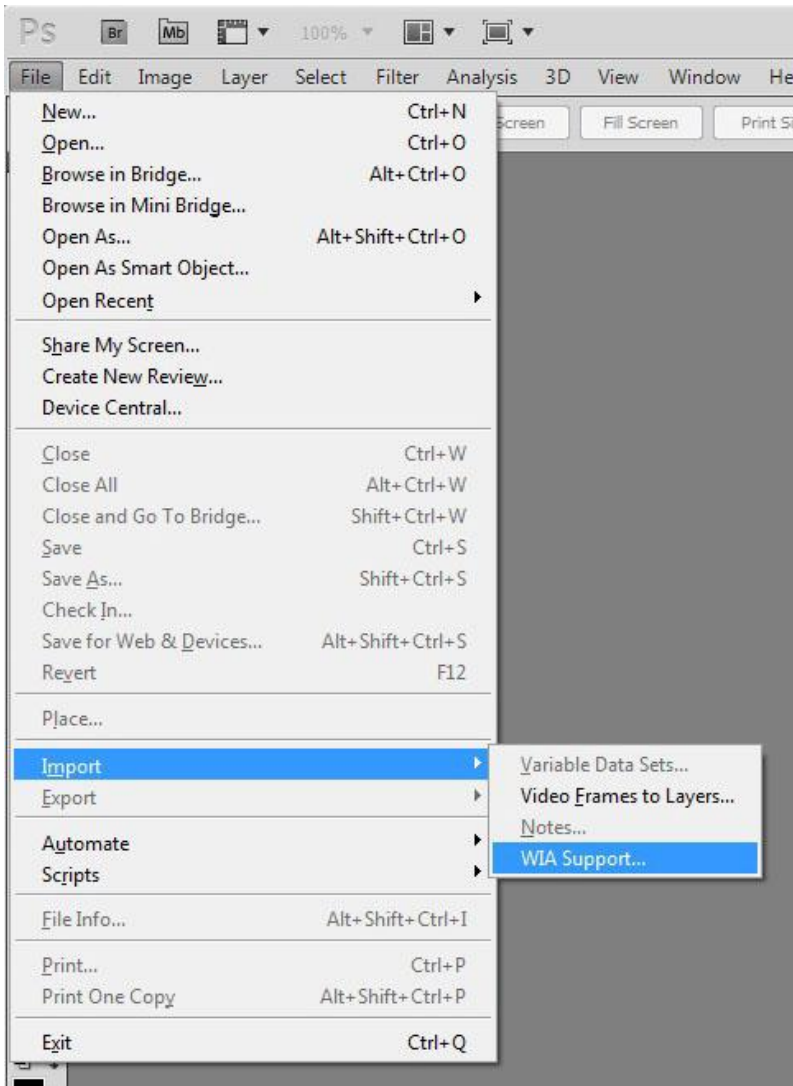


Professional Mode: select your options, click on **Preview** to preview image before scan, click **Scan** to begin scan. All save options are same as **Home Mode**.

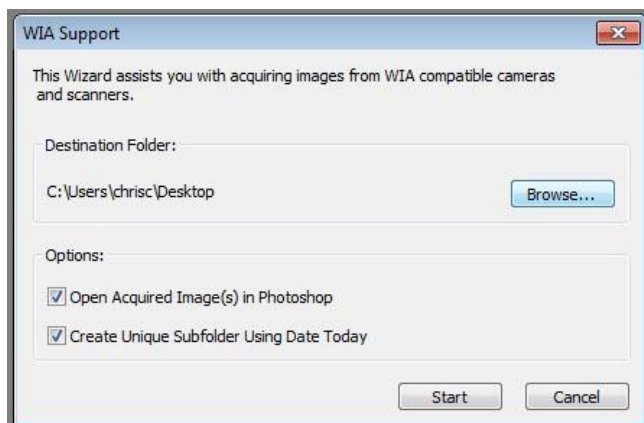


2. Scan within Photoshop (Windows Only)

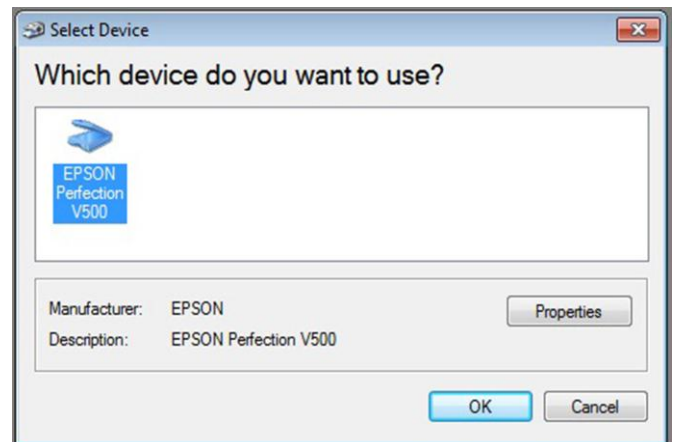
In Photoshop, go to **Import**, then to **WIA Support**



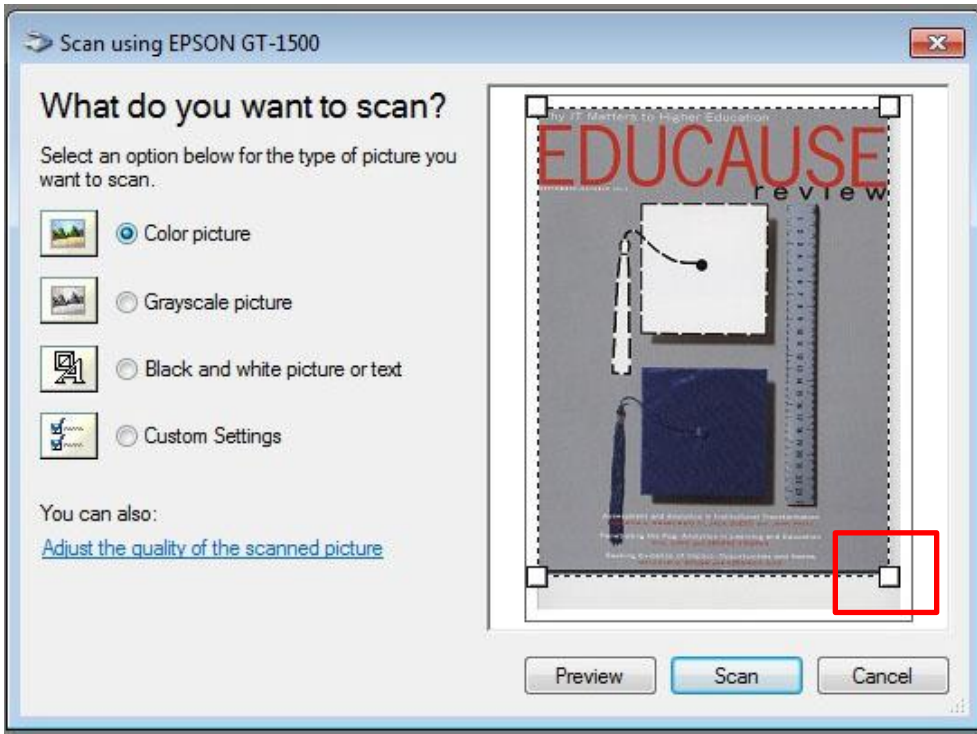
Set your destination to "Desktop" or to your H: drive for easy access. Then click on **Start**



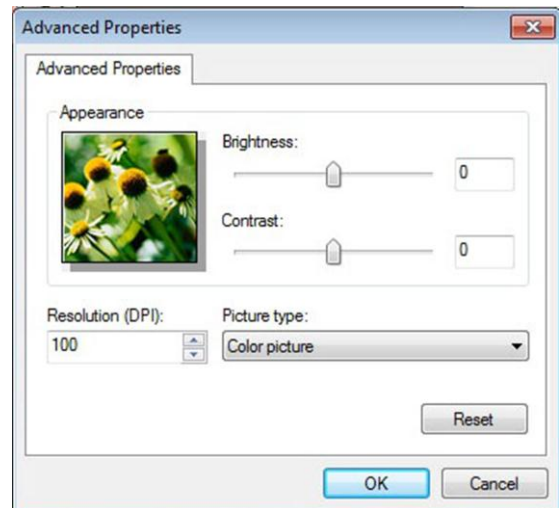
Click **OK** to begin



Select the type of image and click on **Preview** for a sample of scanned image. Resize if necessary by moving white boxes at corners of the image, then click on **Scan** to scan image.



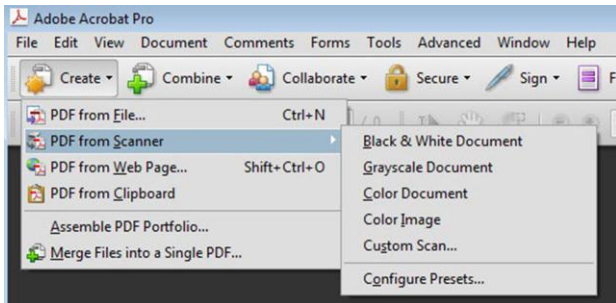
For advanced options and to change the scan resolution, click on “**Adjust the quality of the scanned picture**” as shown above. New window Advanced Properties will appear (See window to right as example).



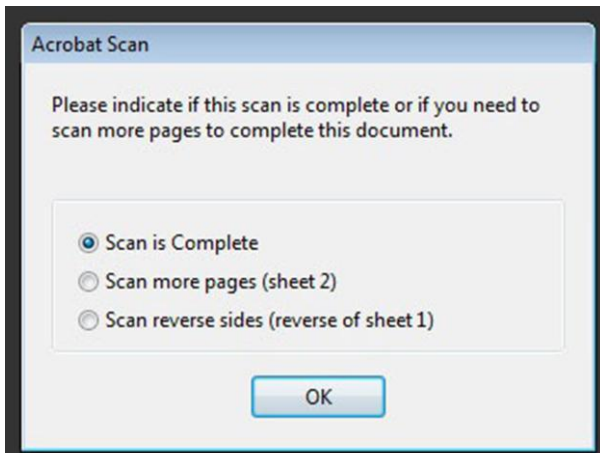
3. Scan within Acrobat Pro 9

Windows

Go to **START Button** to **All Programs** to **Adobe** to **Adobe Acrobat Pro 9**. Click on **Create**, then to **PDF from Scanner**, then select the type of image

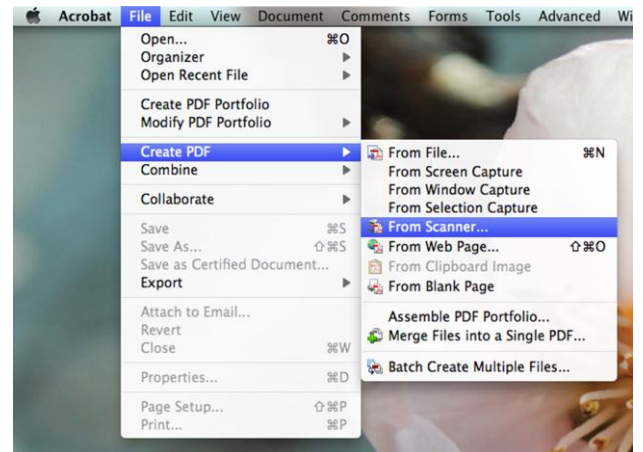


If your scan is a document and after your first scan, please select the option that is applicable to add additional pages or to complete your scan. Then click **OK**.

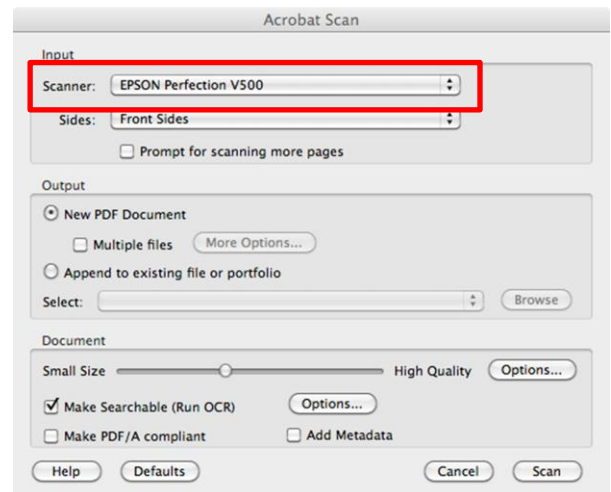


Mac

Open **Adobe Acrobat Pro** from **Dock** or **Applications** folder. Click on **Create PDF**, then **From Scanner**.



Under **Input**, select **EPSON Perfection V500** as **Scanner**. Select desired options, then click **Scan** to begin.



Epson Scan will appear. Select desired Mode and refer to **Home, Office** or **Professional** beginning on page 2 for instructions.