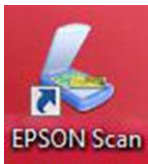


Using Epson G-1500 Scanner.

You can scan images from the Epson scan application, or directly from Photoshop or Acrobat Pro

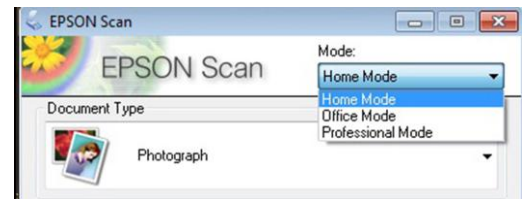
1. Using the Epson Scan Application



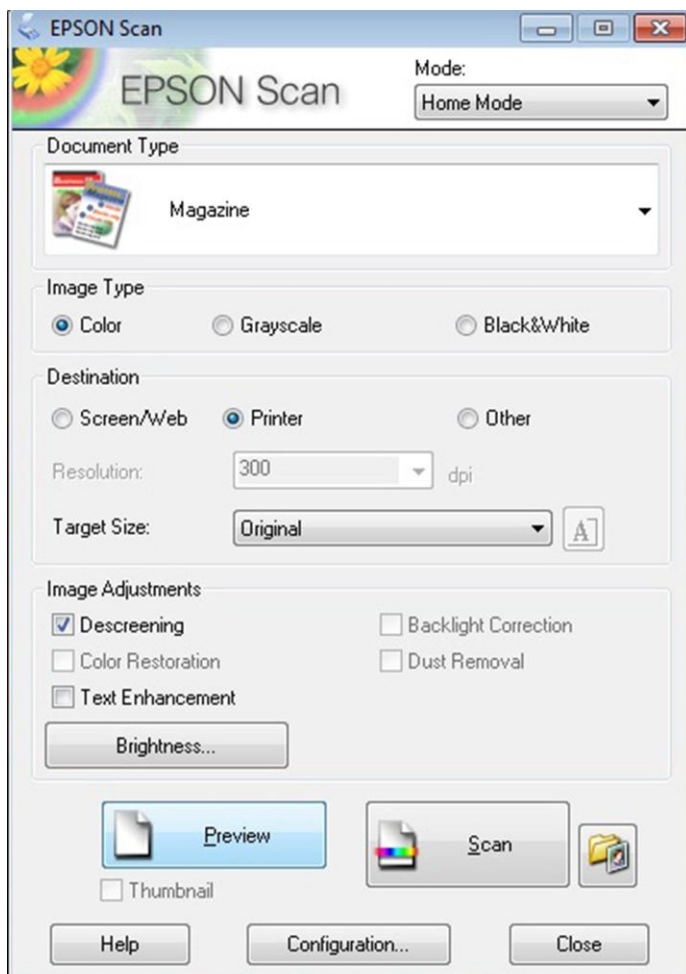
Window: Epson Scan on Desktop

In the Epson scan application, there are four scan modes from automatic to more advanced:

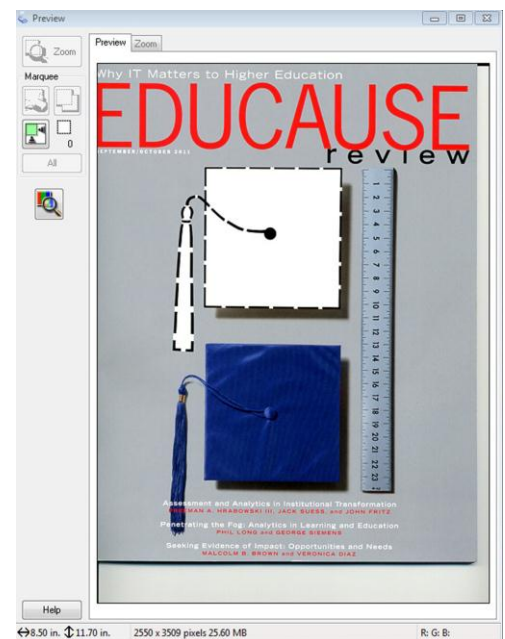
- Home** (recommended) basic options, basic image adjustment
- Office** advanced options, advanced image adjustment
- Professional** expert options, extensive image adjustments and color control



Home Mode*: select your options, click on **Preview** to preview image before scan, then click **Scan** to begin scan.



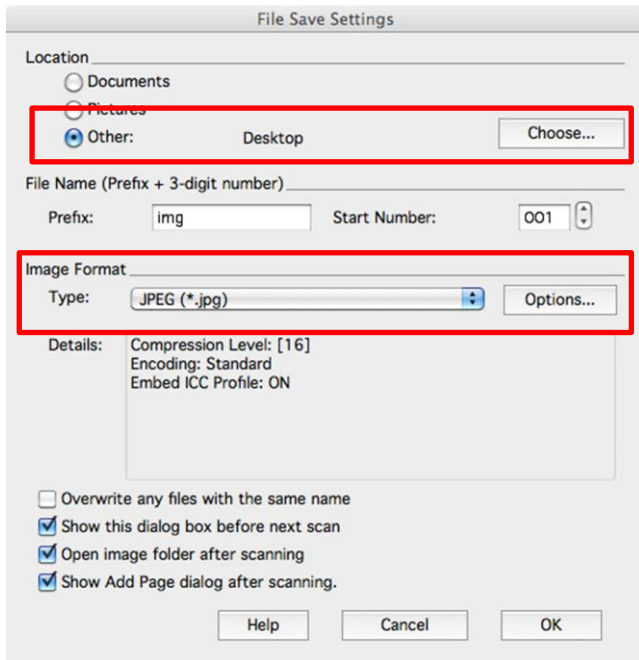
Depending on the type of image, Preview may allow you to select part or the entire image, rotate and



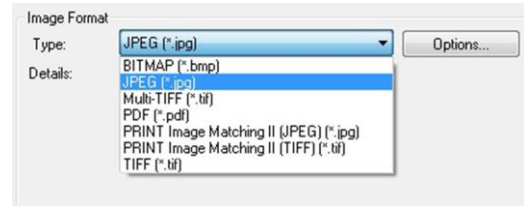
*Note: **Home Mode** is recommended mode for typical image scanning. Basic options for image adjustments and image resolution. In most cases default settings are suitable.

Use **Office Mode** or **Professional Modes** for more advanced image and color adjustment and control. These modes are typically for advanced users.

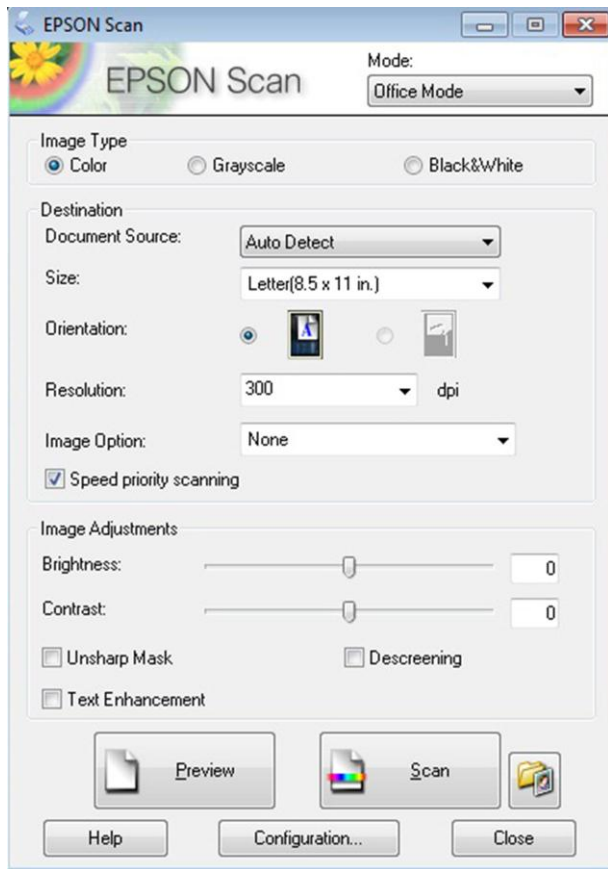
When saving scan, select **Other** and choose **Desktop** or your network share as your destination location to save the file for ease of access. Then click OK.



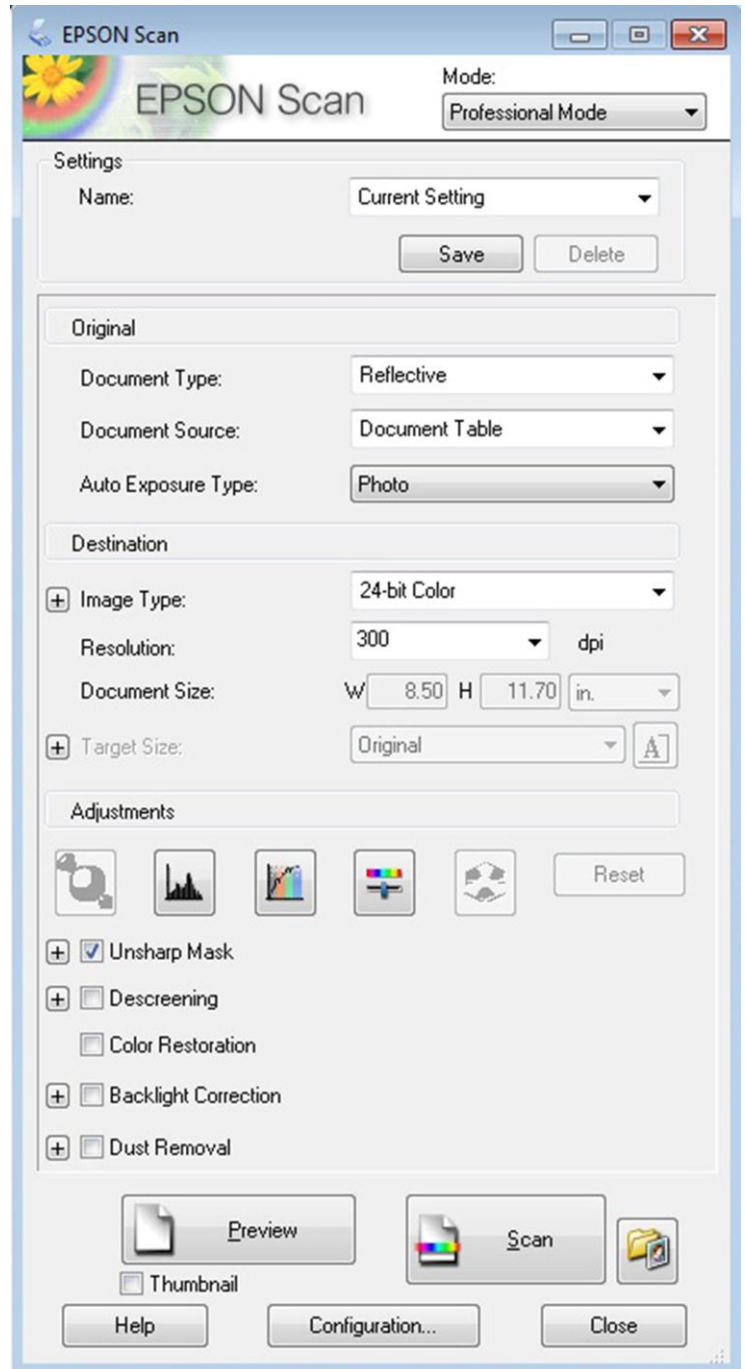
Change the **Image Format** to desired file format, **JPEG** for images, **PDF** or other formats.



Office Mode: select your options, click on **Preview** to preview image before scan, click **Scan** to begin scan. All save options are same as **Home Mode**.

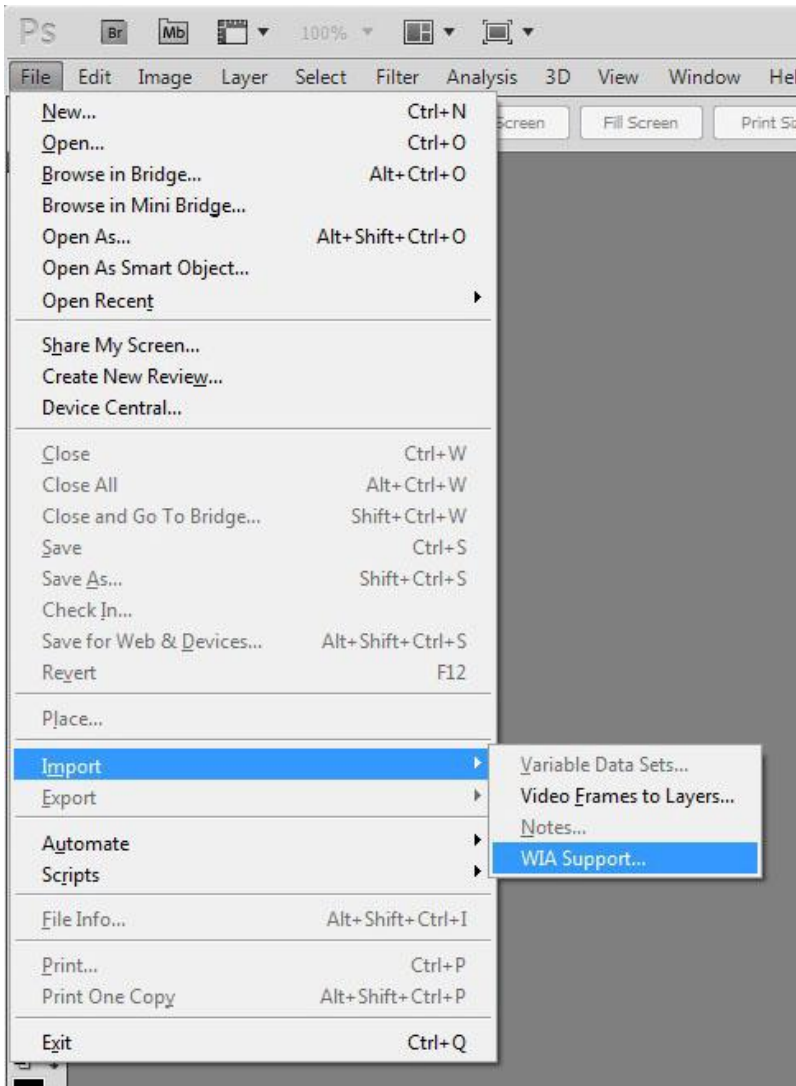


Professional Mode: select your options, click on **Preview** to preview image before scan, click **Scan** to begin scan. All save options are same as **Home Mode**.

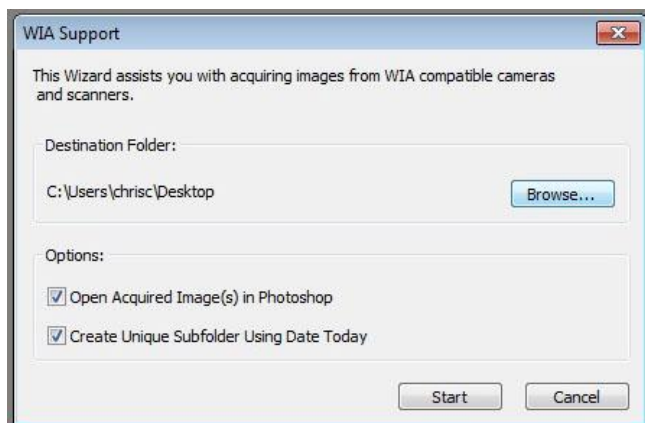


2. Scan within Photoshop

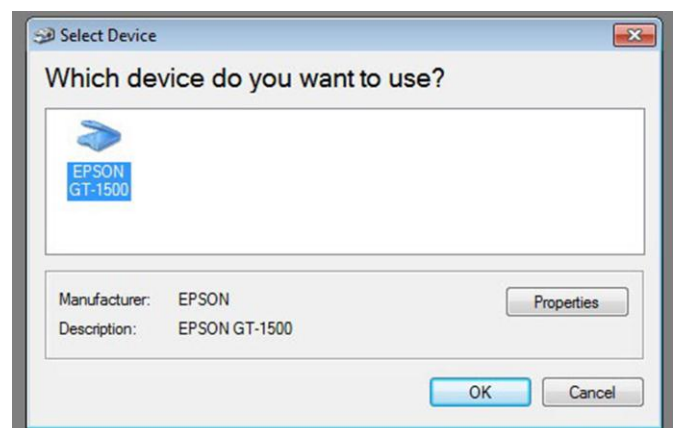
In Photoshop, go to **Import**, then to **WIA Support**



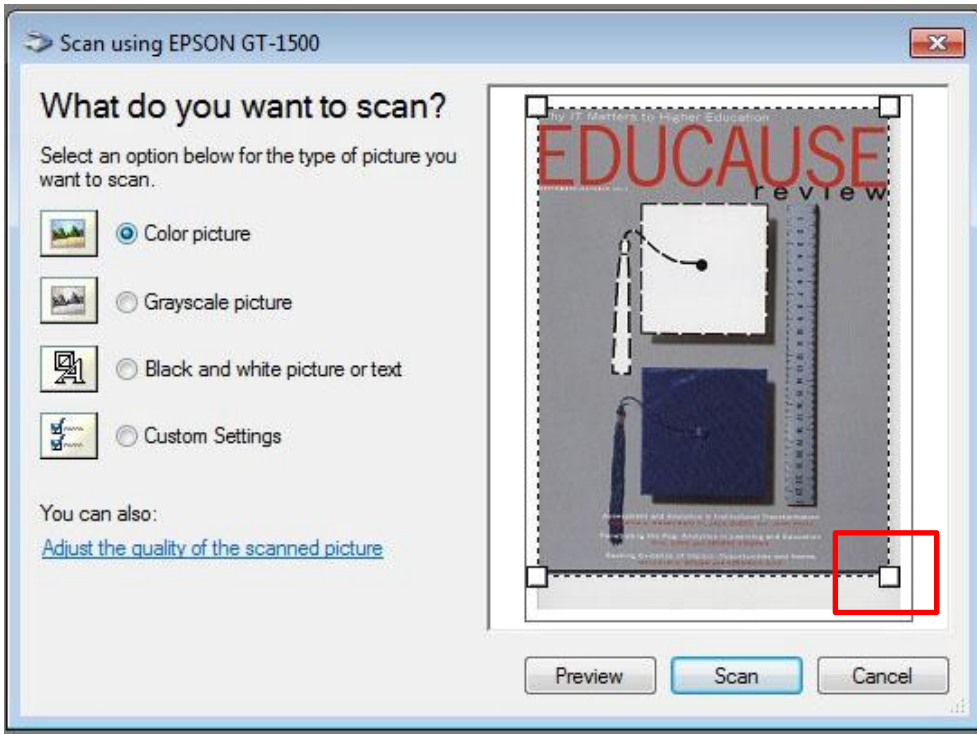
Set your destination to "Desktop" or to your H: drive for easy access. Then click on **Start**



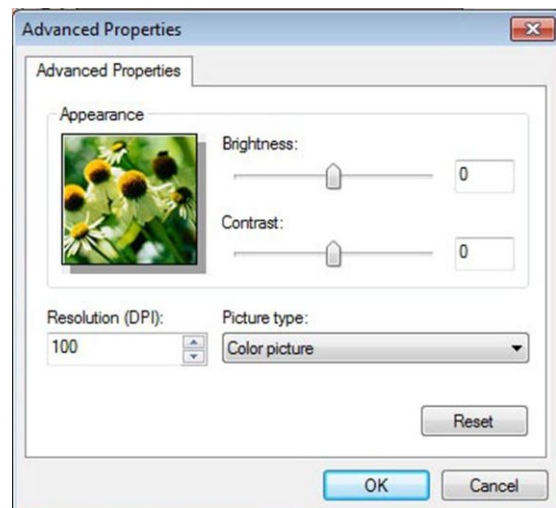
Click **OK** to begin



Select the type of image and click on **Preview** for a sample of scanned image. Resize if necessary by moving white boxes at corners of the image, then click on **Scan** to scan image.

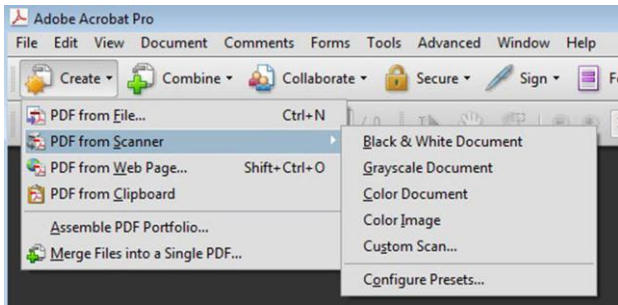


For advanced options and to change the scan resolution, click on “**Adjust the quality of the scanned picture**” as shown above. New window Advanced Properties will appear (See window to right as example).



3. Scan within Acrobat Pro 9

Go to **START Button** to **All Programs** to **Adobe** to **Adobe Acrobat Pro 9**.
Click on **Create**, then to **PDF from Scanner**, then select the type of image



If your scan is a document and after your first scan, please select the option that is applicable to add additional pages or to complete your scan. Then click **OK**.

