

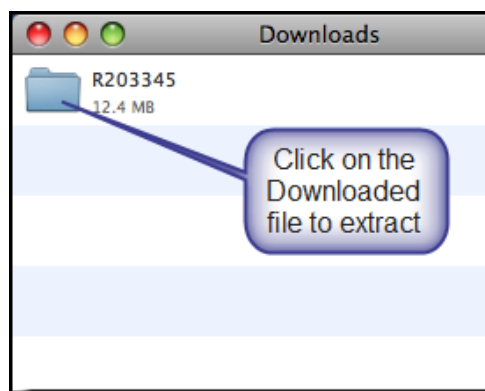
# Dorm Printing

## Mac OS X

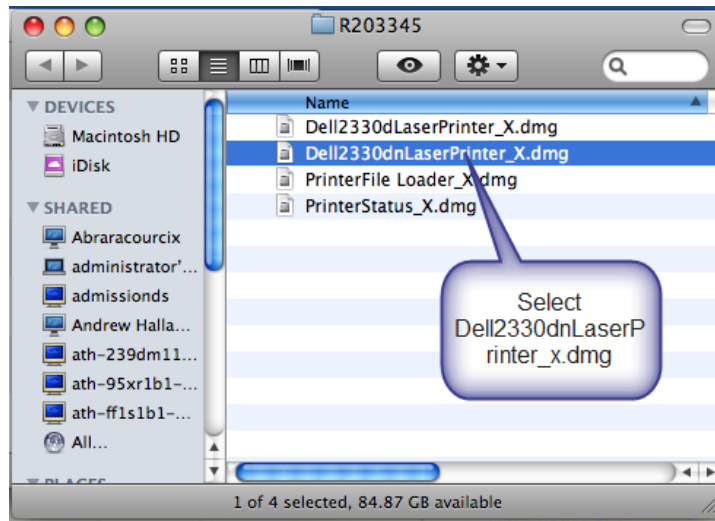
This document will assist you in setting up printers on your computer running Mac OS X to print to the Dorm printers in various locations. The process involves three steps; downloading the Dell 2330DN print driver, installing the printer to your computer, and releasing your print job to the selected printer.

### Step 1: Downloading the Dell 2330DN Print Driver

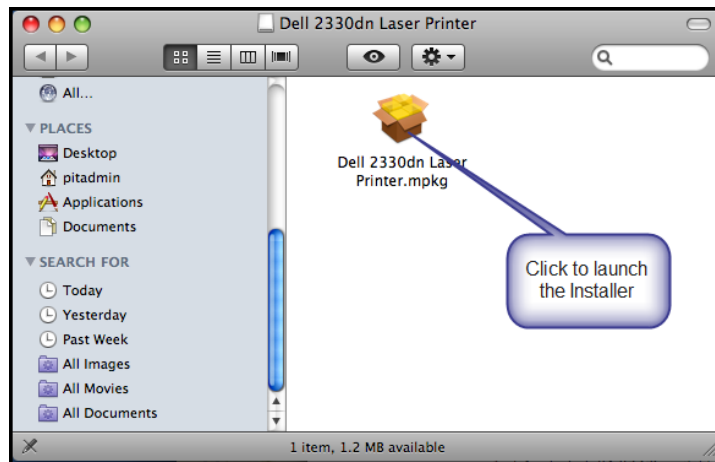
- Point your browser to:  
<http://www.pitzer.edu/resnet/downloads/dell2330Mac/r203345.zip>
- Enter your Pitzer user name and password  
Use the following format: **Pitzer\username**
- In the Downloads dialog box click on the R203345 file you just downloaded to extract it.



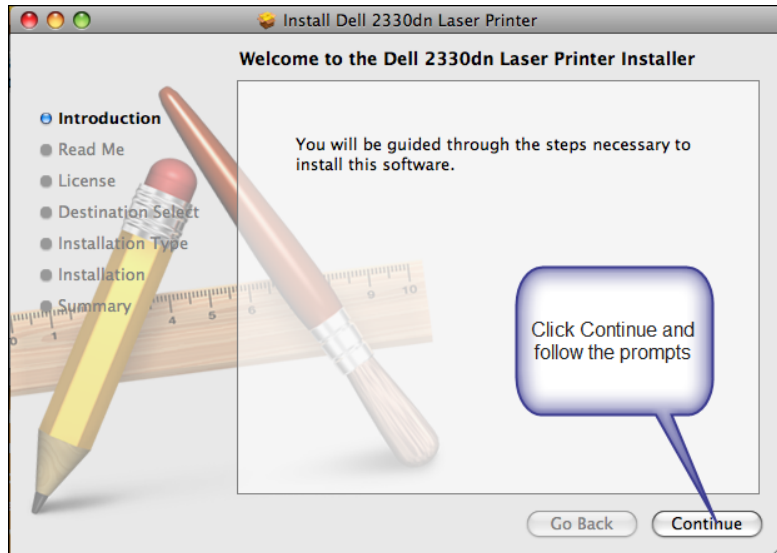
- Click on the Dell2330dnLaserPrinter\_X.dmg file



- Click the Dell 2330dn Laser Printer.mpkg to launch the installer



- Click Continue and follow all the prompts to install the driver



- Finished. The Dell 2330 driver should now be installed on your computer.

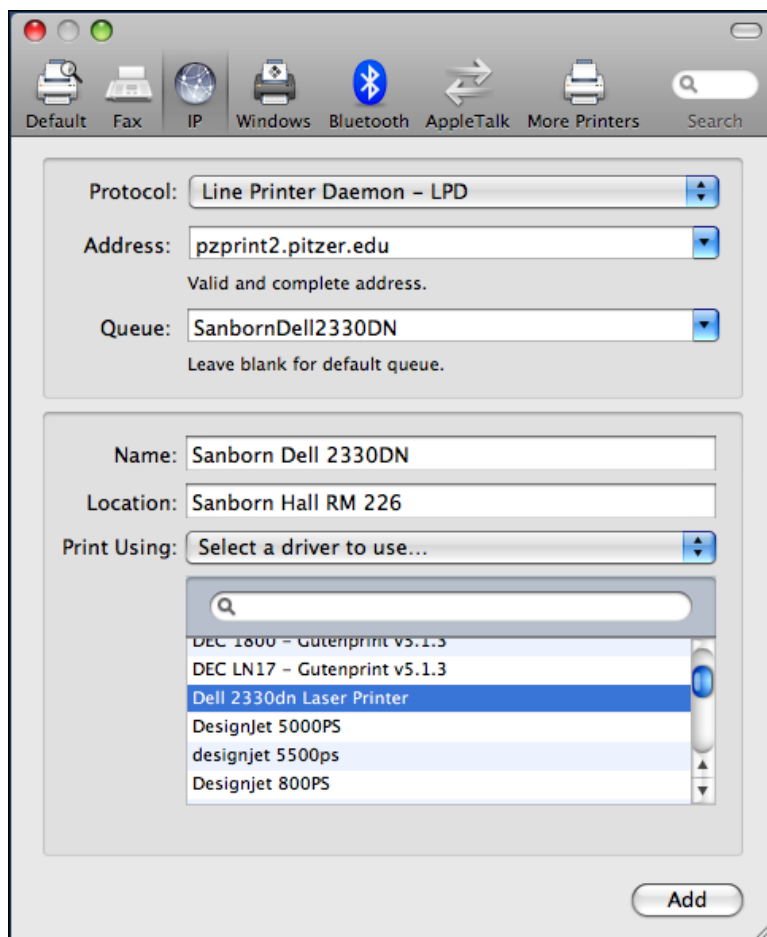
## Step 2: Install the desired printer to your computer

- Go to System Preferences and launch Print and Fax
- Select the IP icon at the top of the dialog box
- In the Protocol box, use the drop down and select Line Printer Daemon – LBD
- In the Address box, enter pzprint2.pitzer.edu
- In the Queue box, enter the Queue name for the desired printer. The available Queue names are listed below.

### Queue Names:

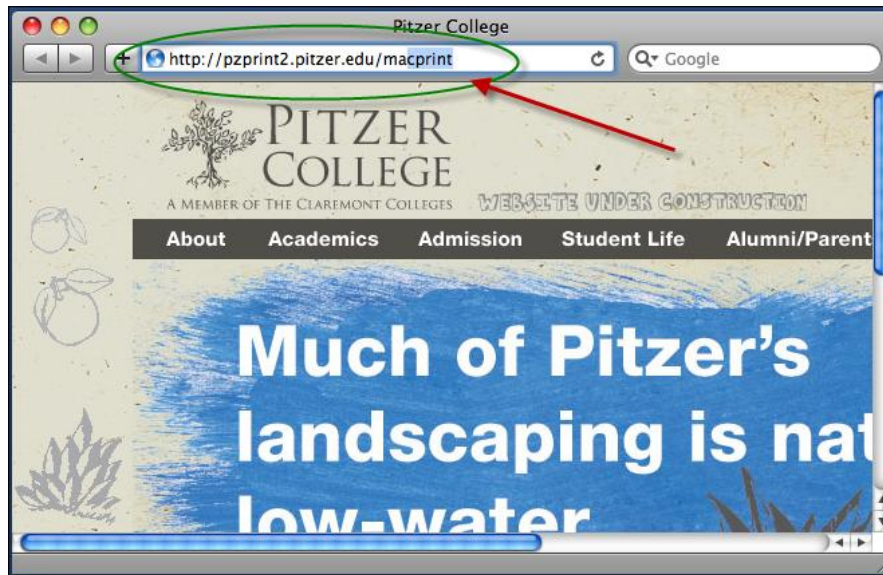
- SanbornDell2330DN
  - AthertonHallDell2330DN
  - GSCDell2330DN
  - HoldenStudyDell2330DN
  - MarquisReadingDell2330DN
- 
- In the Name box , enter a name for the printer
  - In the Location box, enter the location for the printer

- In the Print Using box, use the drop down and select the driver you just installed in Step 1 above. It will be the Dell 2330dn Laser Printer
- Your screen should look similar to the one below. When finished click Add to add the printer to your computer
- Finished. You should now be able to select the new printer from the drop down from the Print menu in your application. Once you send a print job to the printer, you'll need to release it in Step 3 below.



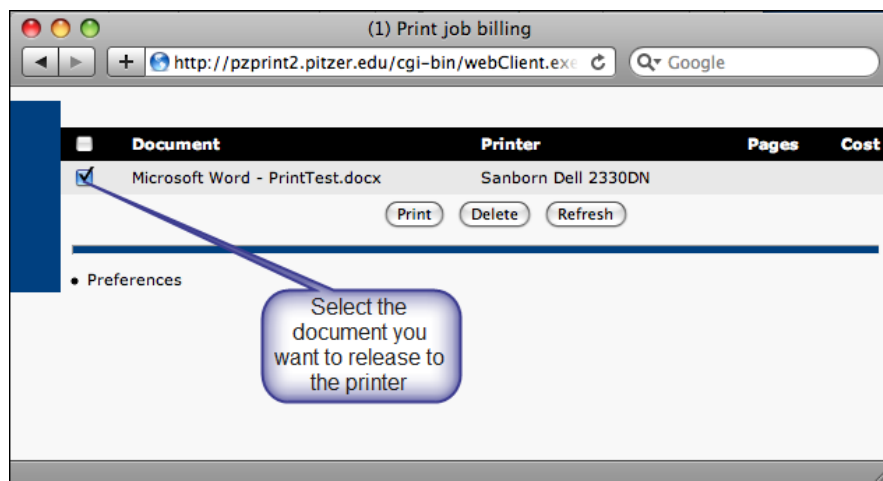
### Step 3: Use the Web Client to Release your Print job

- Point your browser to <http://pzprint2.pitzer.edu/macprint>
- Enter your Pitzer user name and password in the **Authentication Required** box. Use the following format: **Pitzer\username**



- Select the document you wish to print
- Click the **Print** button and your document will be sent to the printer.

**Note:** Remember.... You must have print credit to send your documents to the printer. If you don't have credit your documents will not print.



- Finished