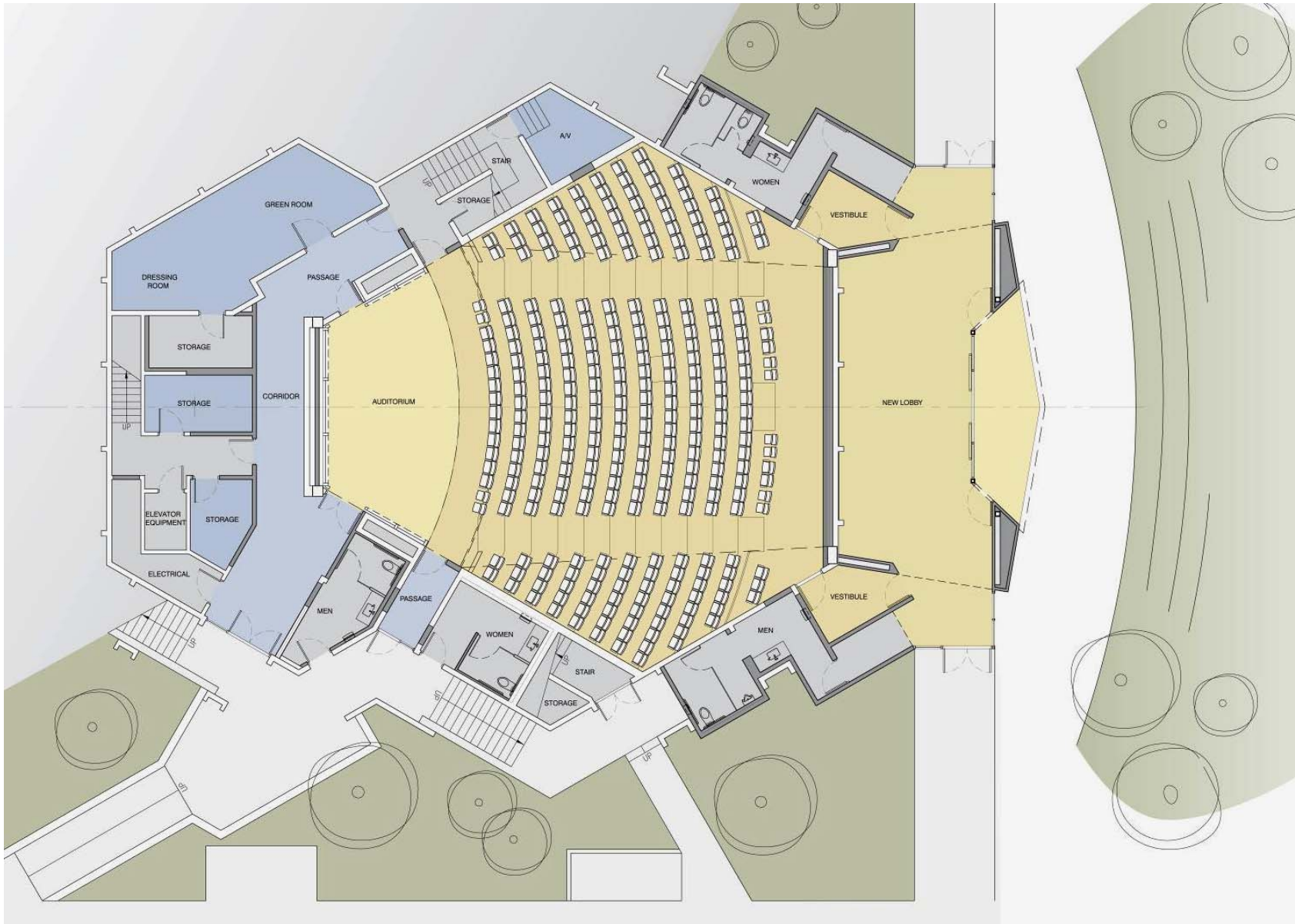


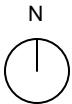
George S. Benson Auditorium Renovation





Benson Auditorium Renovation

Ground Level Plan





Benson Auditorium Renovation

Mounds Elevation (East)

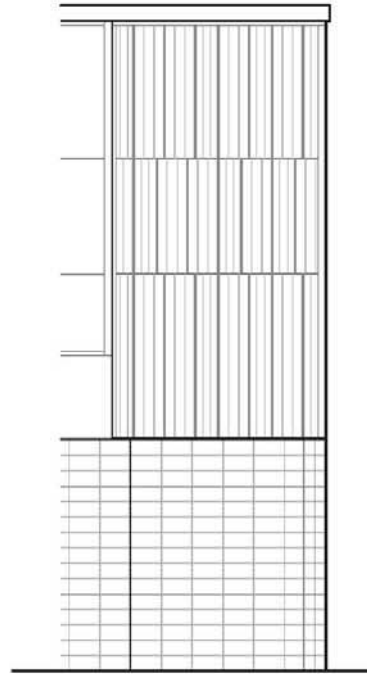


I EXTERIOR PHOTOS @
CORNER, TOP EDGE, & SIDE
EDGE.

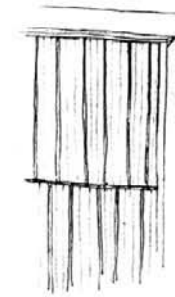


II EXTERIOR
PHOTOS

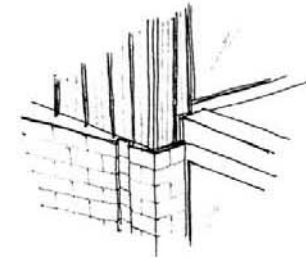
"ZIP-RIB" METAL PANEL APPLICATION EXAMPLE
-THE CALIFORNIA ENDOWMENT



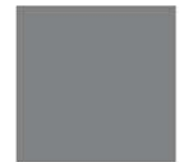
PARTIAL ELEVATION



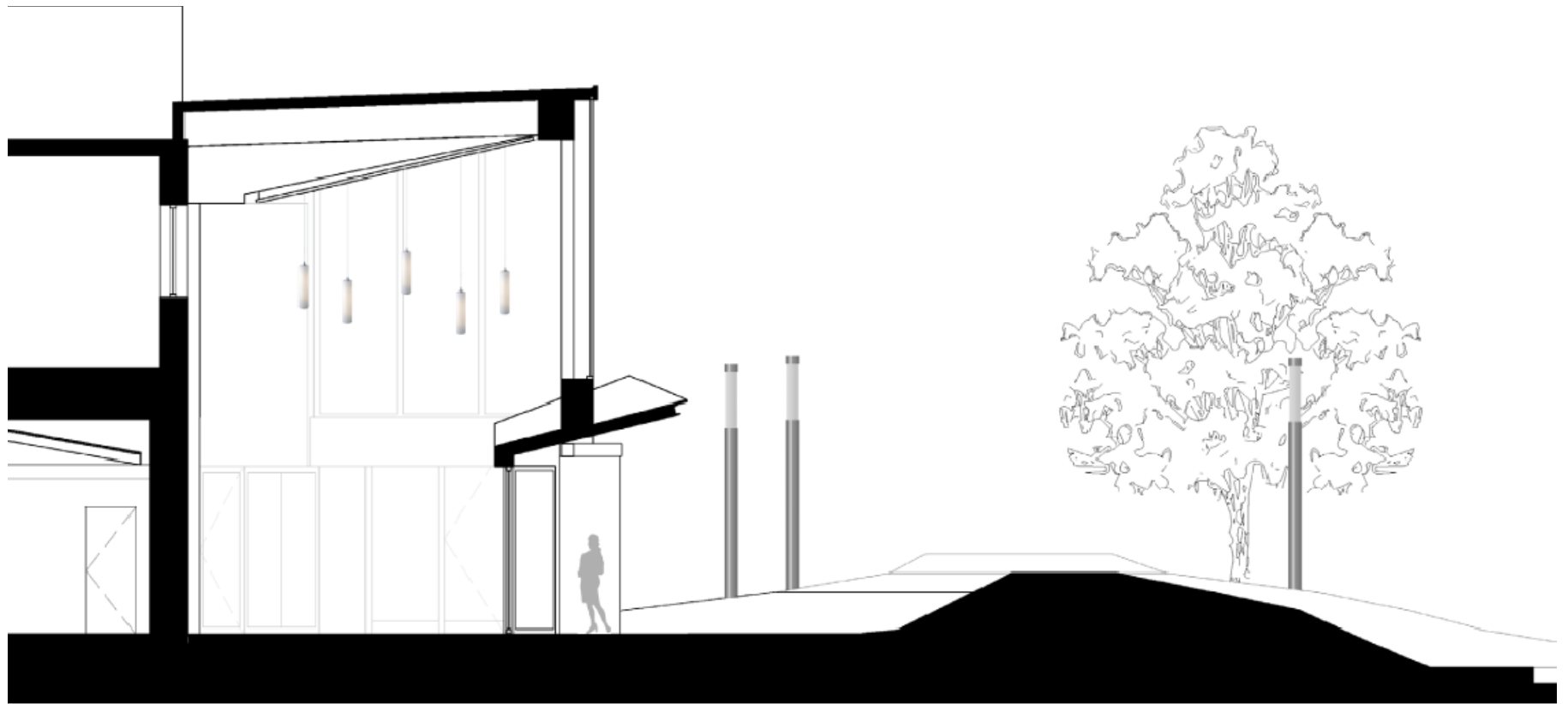
METAL CLADDING SKETCH -1



SKETCH @ CORNER-2

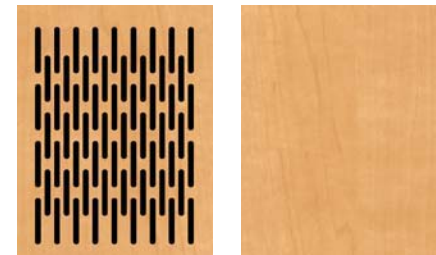
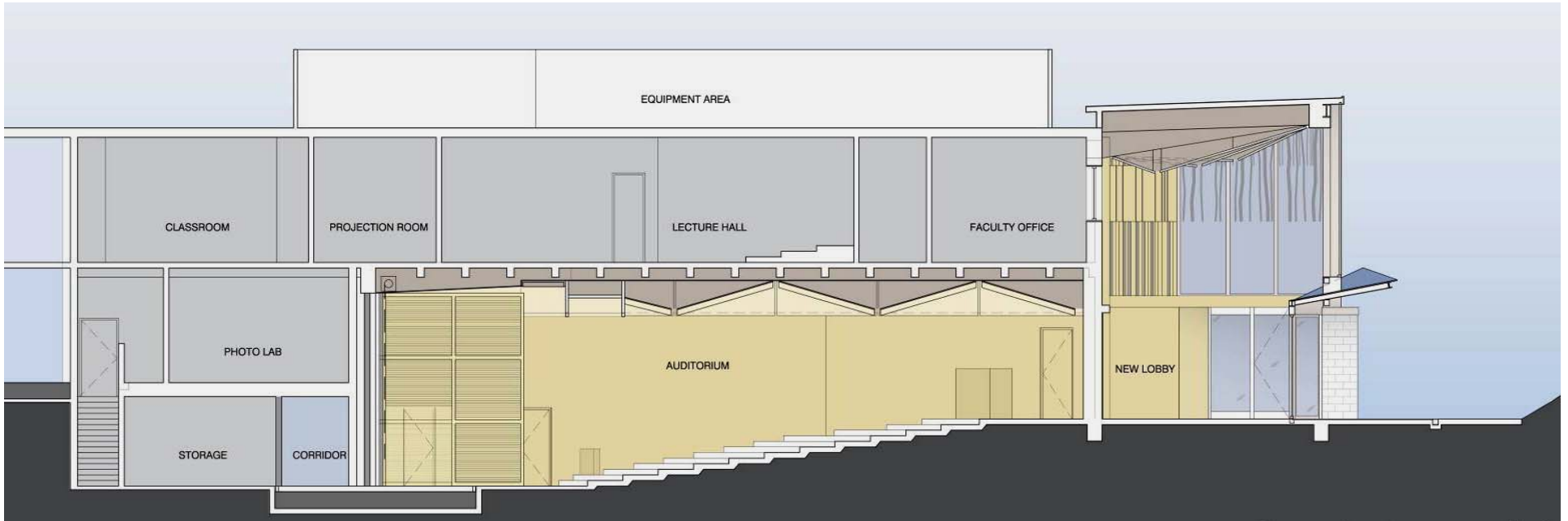


COLOR PALETTE



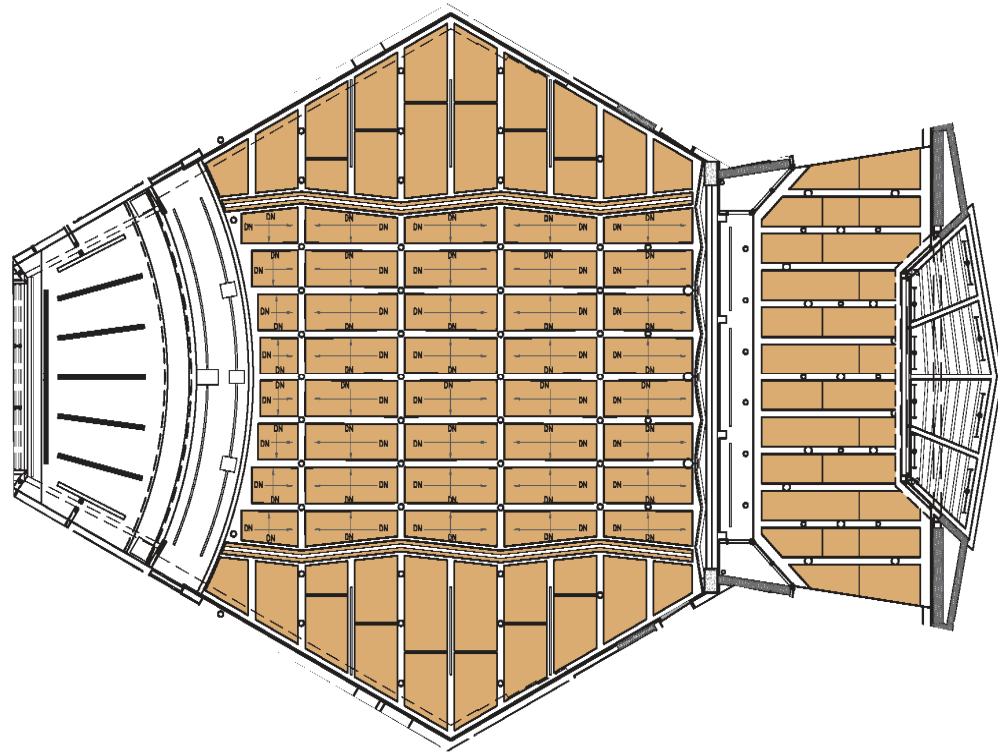
Benson Auditorium Renovation

Section Through Lobby & Mounds



Benson Auditorium Renovation

Section Through Auditorium & Lobby

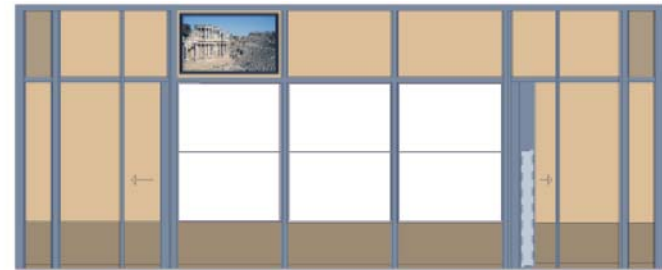
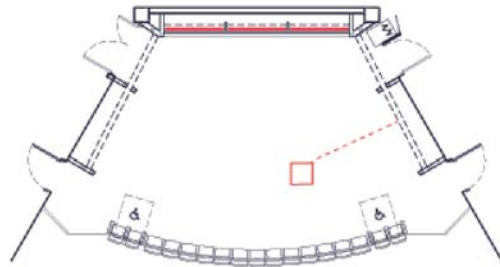


Benson Auditorium Renovation

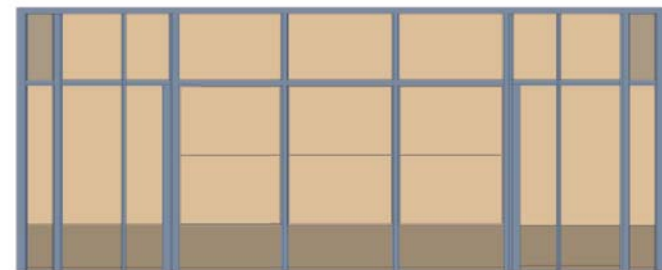
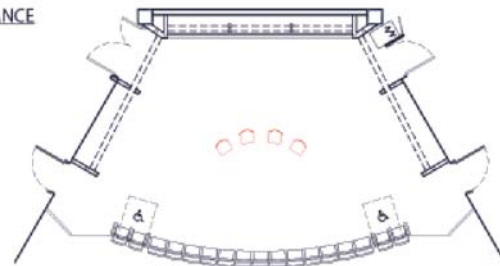


Reflected Ceiling Plan

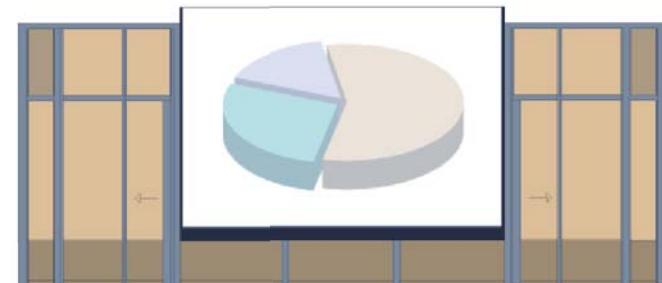
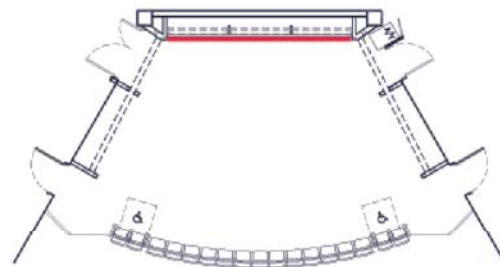
CLASSROOM SETTING
LECTERN
WHITEBOARDS
PLASMA SCREEN
WIRED MICROPHONE AT LECTERN



READING/ SPOKEN WORD PERFORMANCE
FINISHED STAGE SHELL
WIRED MICROPHONES
MUSIC STANDS (FBO)



MULTIMEDIA PERFORMANCE
PERFORMANCE IN FRONT OF THE
SCREEN WITH MEDIA BEHIND



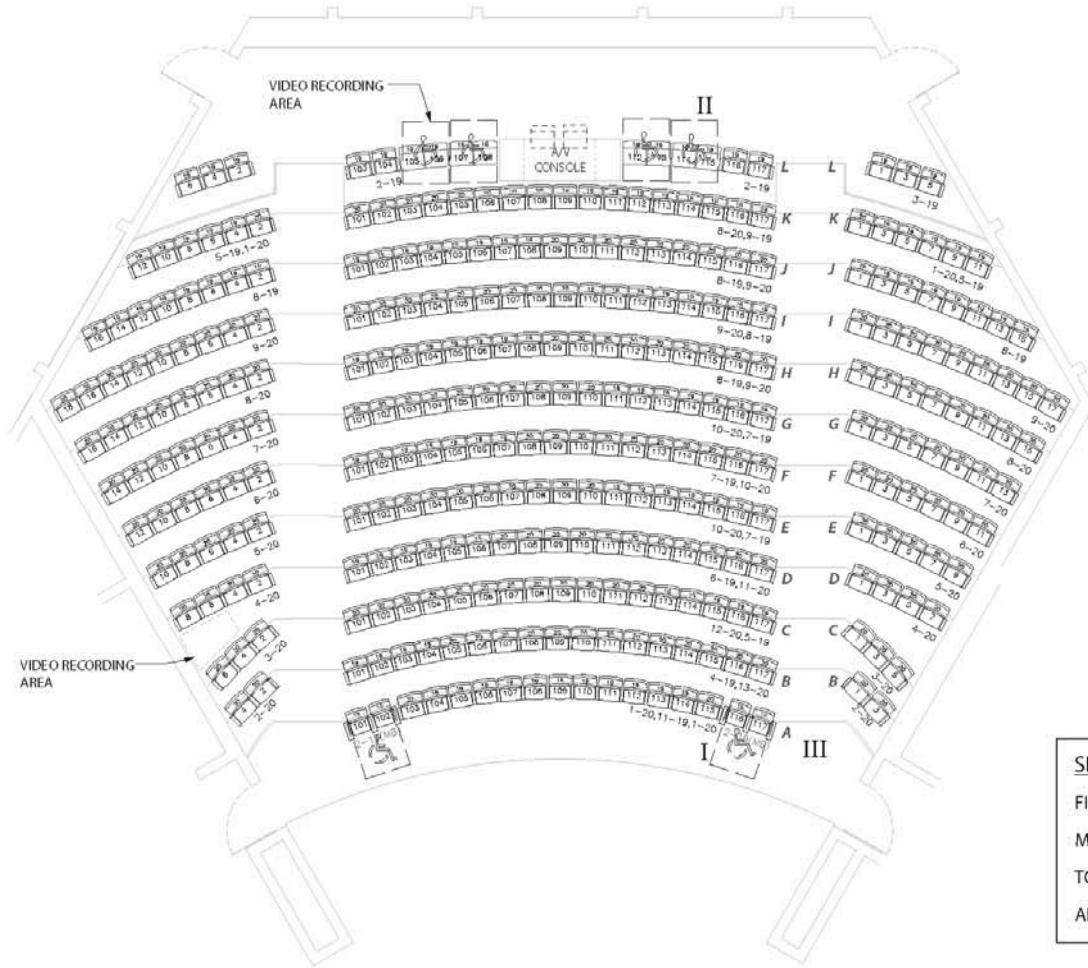
I MOVEABLE COMPANION SEATS WITH SINGLE BASE (DOLLY/HAND TRUCK TO BE PROVIDED BY COLLEGE)



II LOOSE STACKABLE SEATING

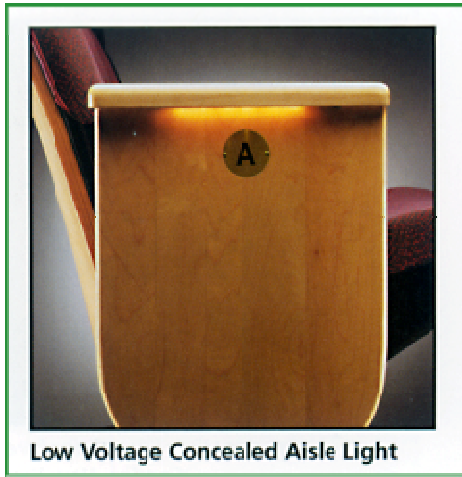


III ROW & SEAT IDENTIFICATION



Armrest Donor Plaques

SEAT COUNT	
FIXED SEATS	309
MOVEABLE SEATS	12
TOTAL =	321
ADA TOTAL =	315



Low Voltage Concealed Aisle Light



No. 12 Seat
 • Plastic Seat Foundation
 • 2" Poly Foam (3" Available)
 • Available with Serpentine Spring or Ergonomic Substrate Construction



No. 56 Aisle End
 • Steel Column
 • Veneer Surfaced Aisle Panel
 • Available with Riser and Cantilevered Mounts
 • Available with Plastic Laminate and Upholstered Aisle Panels, and Block Front



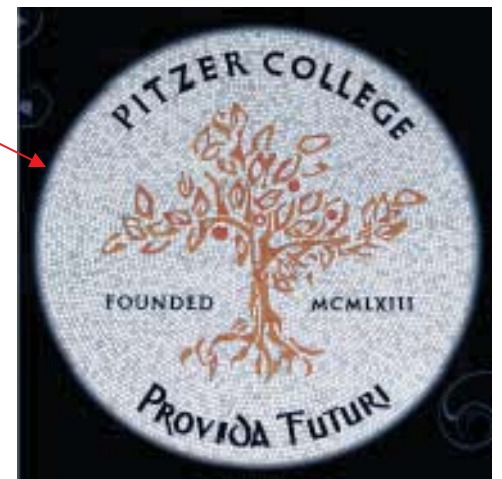
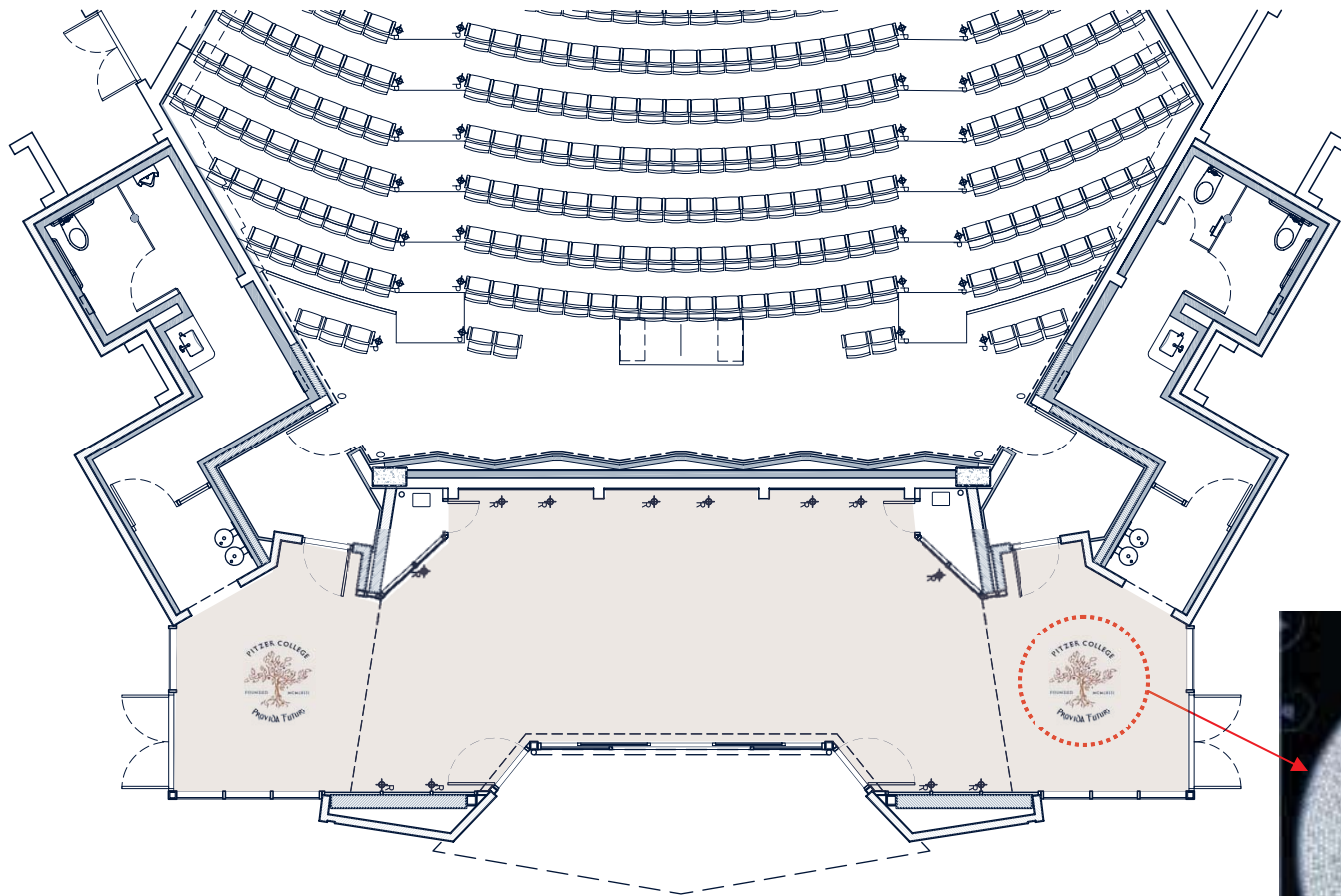
Rounded Wood Armrest



Seating Upholstery



Natural on Maple



Benson Auditorium Renovation

Lobby Flooring



Benson Auditorium Renovation

Lobby Interior Elevations