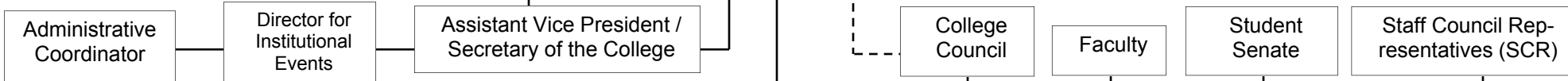


Organizational Chart
2010-11



Board of Trustees

PRESIDENT



Vice President for Academic Affairs/Dean of Faculty

- Assistant to the VP
- Associate Deans (3)
- Asst VP, Study Abroad & International Programs
- Director, Institutional Research & Assessment
- Registrar
- Director, Community Engagement Center
- Director, Pitzer in Ontario Program
- Director/Curator, Pitzer Art Galleries
- Interim Director, Writing Cntr
- Academic Director, Intercoll. Media Studies Program
- Academic Director, Intercollegiate Neuroscience Program
- Academic Director, Vaccine Research Center

Vice President for Administration/Treasurer

- Exec Asst to VP
- Assoc. VP, Administration/Associate Treasurer
- Senior Financial Analyst
- Asst. VP, Campus Facilities
- Asst. Director, Maintenance Ops & Constructions
- Manager, Arboretum/Grounds
- Manager, Custodial Services
- Director, Human Resources
- Director, Information Technology
- Duplicating Supervisor

Vice President for College Advancement

- Exec Asst to VP
- Associate Vice President
- Assistant VP/Campaign Director
- Office Manager
- Director, Advancement Services
- Director, Alumni Relations
- Director, Annual Giving
- Director, Foundation & Corporate Relations
- Director, Parent Relations
- Major Gifts Officer
- Prospect Research Manager

Vice President for Student Affairs

- Assistant to the VP
- Dean of Students
- Associate Dean
- Assistant Dean
- Residence Directors (3)
- Director, Career Services
- Director, CAPAS
- Coord, Substance Abuse Education & Outreach
- Manager, Dining Services (Bon Appetit)
- Manager, Grove House
- Mailroom Supervisor

Vice President for Admission/Financial Aid

- Exec Asst to VP
- Director, Admission
- Operations Manager
- Director, Financial Aid

Vice President for Public Relations

- Director, Communications
- Web Architect
- Graphic Designers (2)
- Public Relations Coord/Web Designer
- Videographer
- Manager, Instructional Services
- Production Mgr, Benson Auditorium
- Production Coord, Benson Auditorium